

Boating Guide

Leeman to Lancelin








Marine Safety



August 2023

SAFETY EQUIPMENT REQUIREMENTS



Recreational Skipper's Ticket			
	The skipper of a recreational vessel, powered by a motor greater than 6 horsepower must hold an RST.	✓	✓
	Lifejacket Carriage A lifejacket, as indicated in the table opposite, must be carried for every person on board.	Vessels smaller than 4.8m ✓ Minimum Level 100 MUST BE CARRIED	Vessels 4.8m and larger ✓ Minimum Level 100 MUST BE CARRIED
		Lifejacket Wearing As indicated in the table opposite.	Children older than one and younger than 12 ✓ Minimum Level 100 MUST BE CARRIED
		Personal Water Craft ✓ Minimum Level 50S MUST BE WORN	Personal Water Craft ✓ Minimum Level 50S MUST BE WORN
	Distress Beacon (in-date) A GPS enabled 406 MHz EPIRB OR if worn by at least one person, a GPS enabled PLB. Distress beacons must be in-date and registered with AMSA.	RECOMMENDED	✓
	Red and Orange Flares (in-date) At least two hand held red flares and two hand held orange flares must be carried. OR Electronic Visual Distress Signal An electronic signalling device may be carried in lieu of flares IF a GPS enabled EPIRB or PLB (must be worn) is also carried.	RECOMMENDED	✓
	Marine Radio A HF or VHF marine radio on any Registrable Vessel when operating more than 4 nautical miles from shore in unprotected waters.	RECOMMENDED	REQUIRED beyond 4 nautical miles RECOMMENDED within 4 nautical miles
	Recommended Additional Safety Equipment It is recommended an anchor and line, a fire extinguisher and a means of removing water be carried.	RECOMMENDED	RECOMMENDED

SERM-OLM0722-1

Contact details

Department of Transport

Email: Ed.Boat@transport.wa.gov.au

Website: www.transport.wa.gov.au/marine

Marine Safety Hotline: 13 11 56

Police

Emergency: 000

Water Police: 9442 8600

Department of Fire and Emergency Services

Marine Rescue Western Australia

Emergency contact: VHF 16

Marine Rescue Leeman

Marine Rescue Jurien Bay

Marine Rescue Lancelin

Boating Weather Forecasts

Boating weather: 1300 815 916

Website: www.bom.gov.au

Department of Primary Industry and Regional Development

Fishwatch: 1800 815 507

Website: www.dpird.wa.gov.au

Department of Biodiversity, Conservation and Attractions

Website: www.dbca.wa.gov.au



Boating in WA just got smarter.
Download the free Deckee app.



anywhere, anytime!
Save time and go online today



Join us at
facebook.com/MarineSafetyWA



For further information go to
www.transport.wa.gov.au/boatingguides
or scan the QR Code

The information contained in this publication is provided in good faith and believed to be accurate at time of publication. The State shall in no way be liable for any loss sustained or incurred by anyone relying on the information. 16-16-02-SER-0523-WEB-S1



Leeman to Lancelin

The coastline between Leeman and Lancelin extends 150 kilometres north of Perth. It is a popular location among fishing, diving and snorkelling enthusiasts, with many islands and reefs, as well as the Jurien Bay Marine Park. Sea lions, dolphins and whales may also be sighted in these waters. It is also a great location for swimming, water skiing and sail boarding.

Local knowledge

The Mid West is known for the strong southerly winds that prevail during the summer months. Skippers are advised to check the weather reports before heading out on the water. Winds can blow up quite suddenly and reach speeds of 30 knots, making a return journey hazardous for small vessels.

Jurien Bay Boat Harbour

The Jurien Bay Boat Harbour, managed by the Department of Transport (DoT) contains 69 boat pens, four service jetties, a four-lane boat ramp, a public beach and boat maintenance facilities, as well as toilets and car park.

Fees are payable for use of small boat harbours throughout the State. The Schedule of marine fees and charges provides detailed information regarding slipway charges, pens, berthing, swing moorings and wharfage fees at Jurien Bay Boat Harbour, and can be found on our website.

All vessels wishing to use pens or service jetties should advise the facility manager or Geraldton DoT office prior to arrival. Upon arrival please visit the DoT office to complete all relevant documentation and facilitate payment.

It is a condition of use that all users are to comply with the gas, electrical and insurance requirements.

Reduce wash

Damage to vessels and floating pen jetties can be caused by a vessel's wash. Look behind you occasionally to make sure that your boat is not creating too much wash. If your wash is affecting other boats and property, slow down!

Obstruction of navigation aids, channels and leads

Cray pots, lines and floats, drop nets, fishing nets, marker buoys or other buoyed objects can not be placed or allowed to remain in any channel or fairway in any port or harbour, or in any channel, fairway or passage in any navigable waters without the permission of DoT.

Also you can't anchor or moor a vessel in any channel or fairway, unless the vessel is in distress.

Boat ramp courtesy

A good skipper plans for a day on the water and organises equipment, motors and mooring lines before leaving the boat ramp. Remember to:

- use designated rigging and de-rigging areas to avoid impeding other people launching and retrieving vessels;
- follow the directions on signage and or painted on the roadway;
- use the correct lanes for launch and retrieval;
- move quickly to the end of the jetty allowing for other people to launch and recover; and
- read all information signs at boat ramps to familiarise yourself with the local area.

Marine rescue

Please remember to log on to the nearest marine rescue service before heading out to sea and supply them with:

- vessel name, registration number or call sign;
- departure point and time;
- destination;
- trip intentions;
- number of people on board;
- amount of fuel carried; and
- estimated time of return.

This basic information can make a big difference in a response to an emergency.

It is also important to remember to log off with the marine rescue to avoid a search being initiated.

Vessel registration

Most boats or yachts must be registered with DoT and an annual registration fee is payable.

Vessels that must be registered

If your boat has a motor, or is fitted for one, it must be registered and is subject to an annual registration fee. Yachts, canoes, surf skis and other craft not fitted for a motor, are not required to be registered.

Transfer of ownership

You must advise DoT on the sale (within seven days) or the acquisition (within 15 days) of any power driven vessel.

Interstate vessels

If your boat is registered in another state, you have three months after bringing it into WA to register it with DoT (recreational boats brought in from the NT have only 30 days).

For further information visit our website or call 13 11 56.

GPS validation markers



Global Positioning System (GPS) validation markers are unique visible marks placed at a number of boat ramps and jetties where mariners and owners of portable GPS units can validate their position and map datum settings.

The markers are available between Leeman and Ledge Point. The markers are small, flat and yellow, similar to 'cats eye' road lane markers. For more information visit our website.



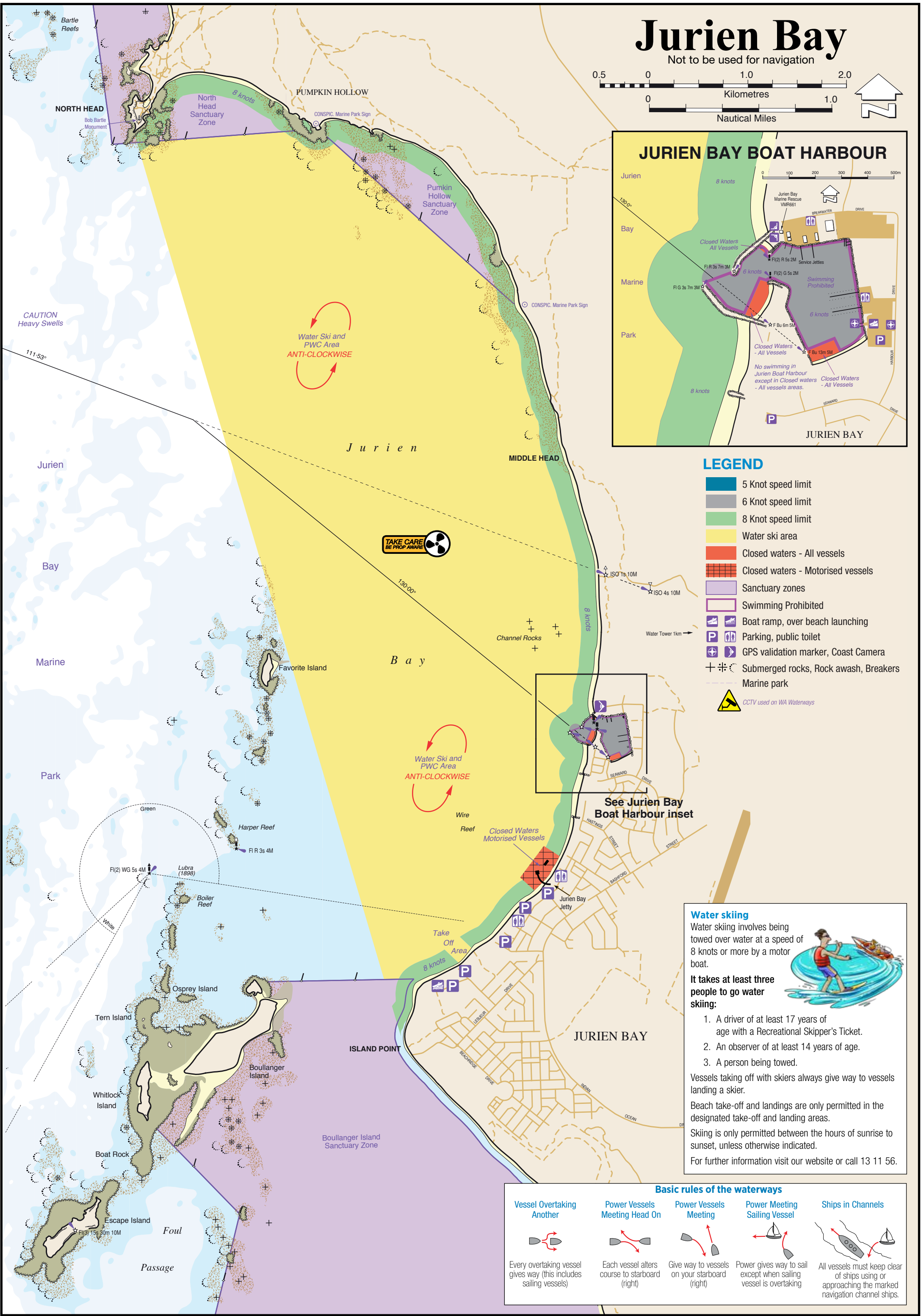
Coast Cameras

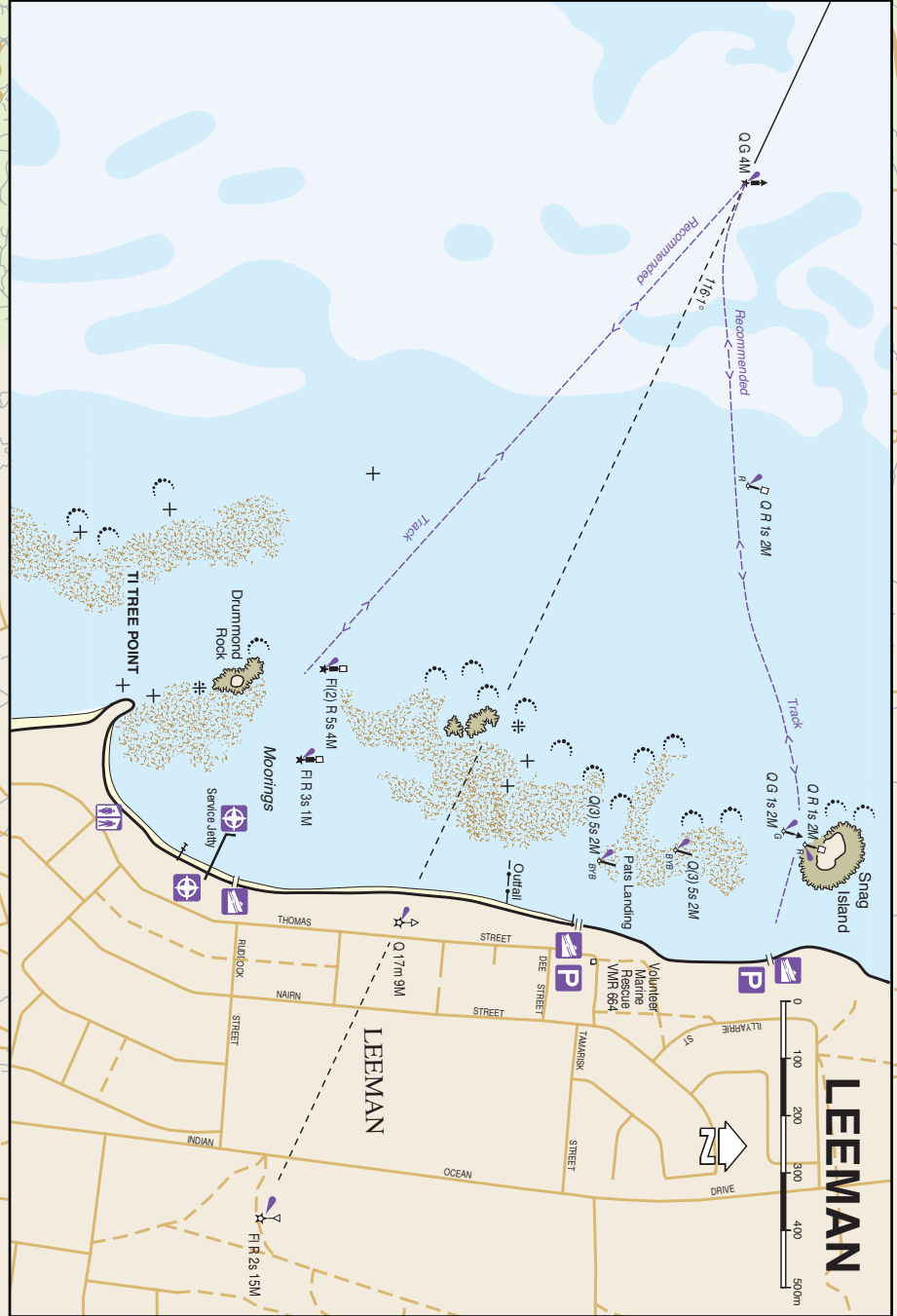
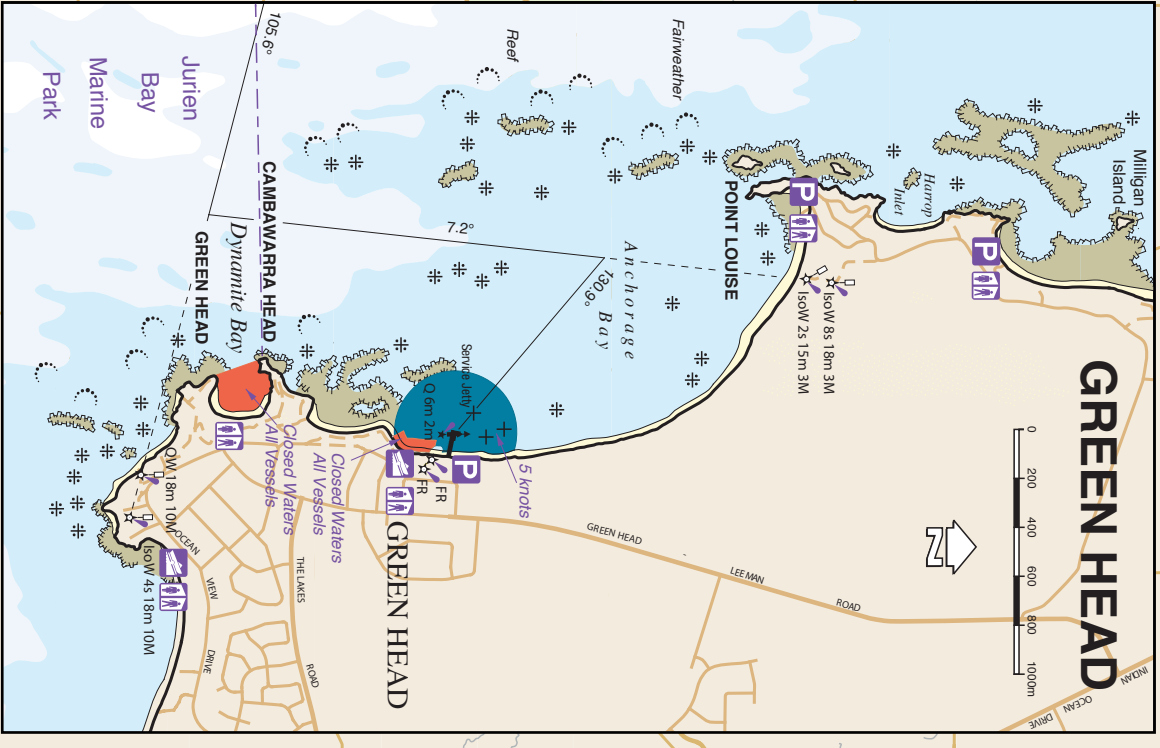


Coast Cameras provide boaters and other aquatic users with near live images of the current weather and ocean conditions at selected locations along the coast.

The images are updated every minute and displayed on our website:

<http://www.transport.wa.gov.au/coast-cams>





Recreational Skipper's Ticket

The person in charge of a recreational vessel with a motor of **6 horsepower or less** is not required to hold a Recreational Skipper's ticket (RST).

A skipper in charge of a recreational vessel with a motor **greater than 6 horsepower** is required to hold an RST and carry it when boating.

Age restrictions

A person under 10 years may not drive a motor boat. RST holders over 14 but under 16 years of age are restricted to operating during daylight hours at a speed less than 8 knots.

Interstate skipper's tickets

If you hold a valid/current interstate ticket, recognised by DoT and you enter, as a visitor or with the intention of permanently residing in Western Australia, you have three months to have the qualification recognised. For further information visit our website or call 13 11 56.

Diving

Any boat with divers (not snorkelers) operating from it must always display signals by day or night to alert other boat users. The daytime signal for divers is an International Code Flag "A". The flag must be at least 750 millimetres long and 600 millimetres wide. Divers operating without a vessel, for example from a jetty, must also display the International Code Flag "A".

The flag can be displayed from a buoy and must not be less than 300 millimetres in length and 200 millimetres in width.

The flag must be clearly visible to all vessels operating in the vicinity.

Vessels to keep clear

When approaching a place or another vessel displaying the International Code Flag "A" or the appropriate signal during the hours of darkness, you must —

- keep your vessel at least 50 metres clear of that place or vessel; or
- where it is not possible to keep 50 metres clear of that place or vessel —
 - proceed at the slowest speed at which the vessel can be safely navigated; and
 - maintain a proper lookout for people in the water.

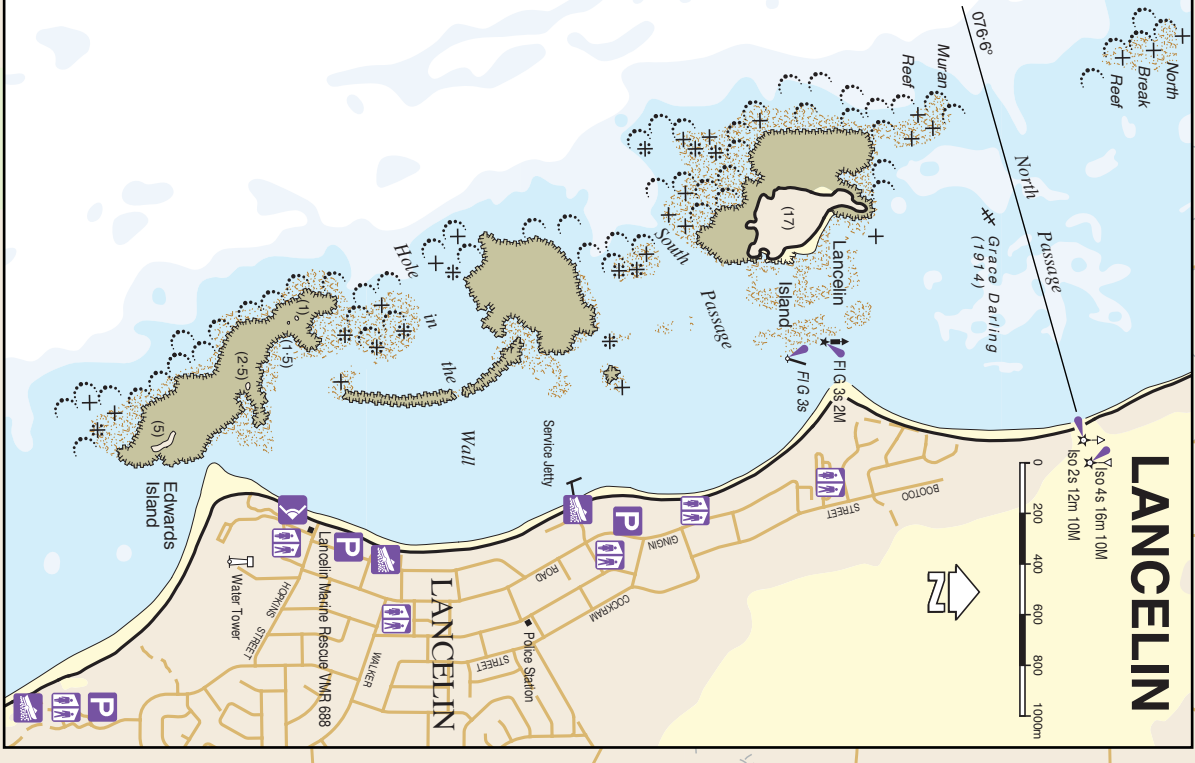
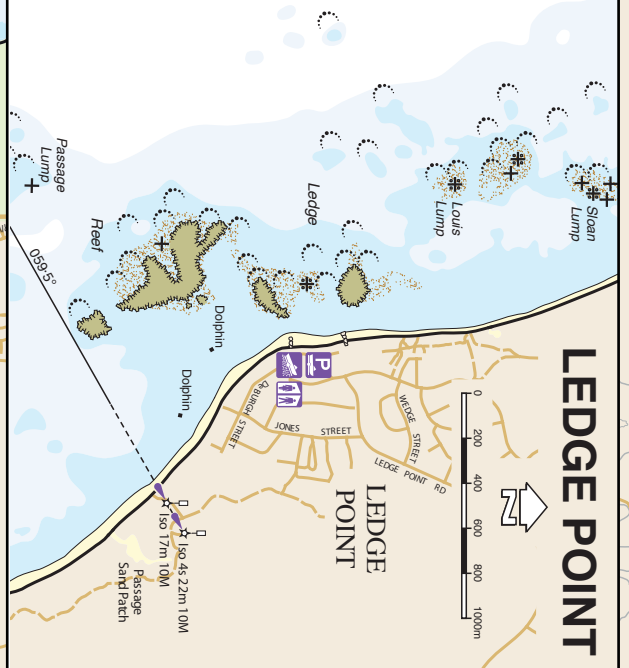
For further information visit our website or call 13 11 56.

Personal water craft (PWC)

Every skipper of a PWC must hold an RST. A skipper who is older than 14 but under 16 years of age with an RST can only operate a PWC during daylight hours at a maximum speed of 8 knots.

- Every person on board a PWC must wear a lifejacket (minimum 50S) at all times.
- When travelling beyond 400 metres from shore in unprotected waters you need:
 - a GPS enabled EPIRB or PLB (must be worn);
 - flares or electronic visual distress signal device.
- Beyond 4 nautical miles from shore in unprotected waters a marine radio must also be carried.

For further information visit our website or call 13 11 56.



Remember to LOG ON! LOG OFF! every trip

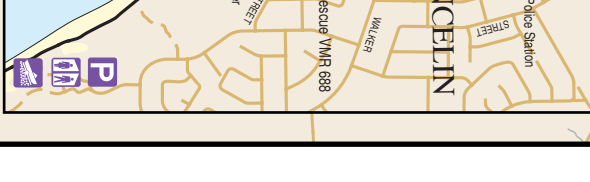
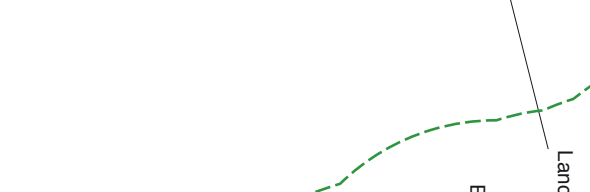
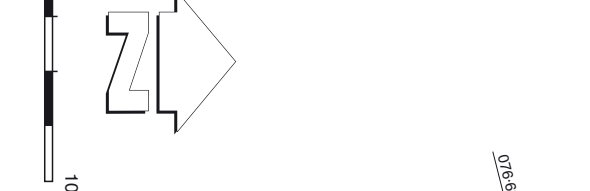
with the local Marine Rescue group

Leeman to Ledge Point

Not to be used for navigation

0 2.5 5 10 Kilometres

0 5 10 Nautical Miles



Remember to LOG ON! LOG OFF! every trip

with the local Marine Rescue group

Leeman to Ledge Point

Not to be used for navigation

0 2.5 5 10 Kilometres

0 5 10 Nautical Miles

