



Mandurah Canal Navigation Marine Safety



Cover photo: Courtesy MAPTCO

Navigation lights

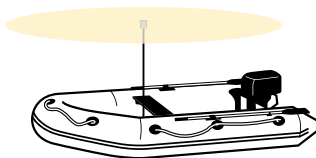
Navigation lights are required to be displayed from sunset to sunrise. Check that your navigational lights are working and are correct for your type of vessel.

Vessels may be inspected by authorised officers before and during a trip. Vessels with no navigational lights or deficient ones may be fined and will be directed to the nearest launch ramp.

Vessels are not to display any lights that cause interference or confusion to the required navigation lights or other vessels. Vessels can't display spot lights at any time while navigating.

Vessels under 7 metres with a maximum speed of less than 7 knots

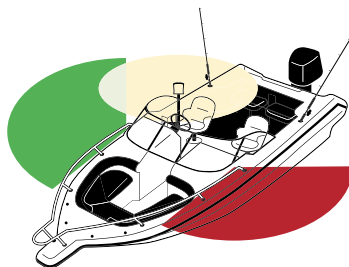
Power vessels of less than 7 metres in length whose maximum speed cannot exceed 7 knots shall exhibit a clearly visible, all round (360°) white light and if possible, separate or combined sidelights.



Vessels under 12 metres

Power vessels of less than 12 metres in length shall exhibit:

- i) separate or combined sidelights and an all round white light; or
- ii) separate or combined sidelights, a masthead light and a stern light (see figure i).



Masthead or white all round light shall be positioned at least 1 metre above the sidelights.

Vessels 12 metres to 20 metres

Power vessels of more than 12 metres in length but less than 20 metres in length shall exhibit:

- i) a masthead light, separate sidelights and stern light; or
- ii) a masthead light, combined sidelights and stern light.

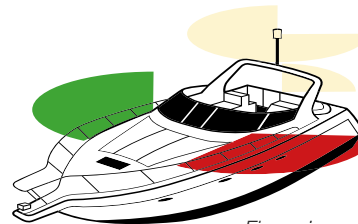
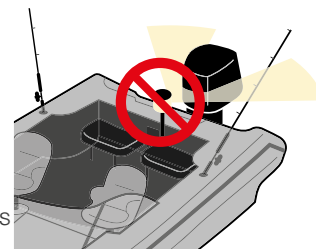


Figure i

The masthead light shall be positioned at least 2.5 metres above the gunwale. Combined sidelights shall be positioned at least 1 metre below the masthead light.

Check that there is nothing obscuring your vessel's navigation lights. The masthead light on many trailer boats is on an extending pole at the stern, and it does not lift high enough to be visible over the cabin top or windscreen. This is dangerous and unacceptable.



Vessels that must be registered

If your boat has a motor, or is fitted for one, it must be registered.

Tender vessels

Tender vessels are not to be used for viewing the Christmas lights.

Flares

There are severe penalties for the improper use of flares. It is an offence to use or set off a distress signal flare except in the case of an emergency.

Contact details

Department of Transport

Email: marine.safety@transport.wa.gov.au
Website: www.transport.wa.gov.au/imarine
Marine Safety Hotline: 13 11 56

Boating Weather Forecast

Boating Weather: 1900 955 350
Website: www.bom.gov.au/marine

Police

Water Police: 9442 8600
Mandurah: 9581 0222
Pinjarra: 9531 1666
Emergency: 000

Volunteer Marine Rescue Services

Emergency contact: VHF 16 and 27Mhz 88
Mandurah (VMR611): 9535 4789

Department of Primary Industry and Regional Development

Website: www.dpird.wa.gov.au
Mandurah: 9583 7800

Department of Biodiversity, Conservation and Attractions

Website: www.dbca.wa.gov.au
Mandurah: 9405 0750

Mandurah Offshore Fishing and Sailing Club

Mandurah: 9535 6251

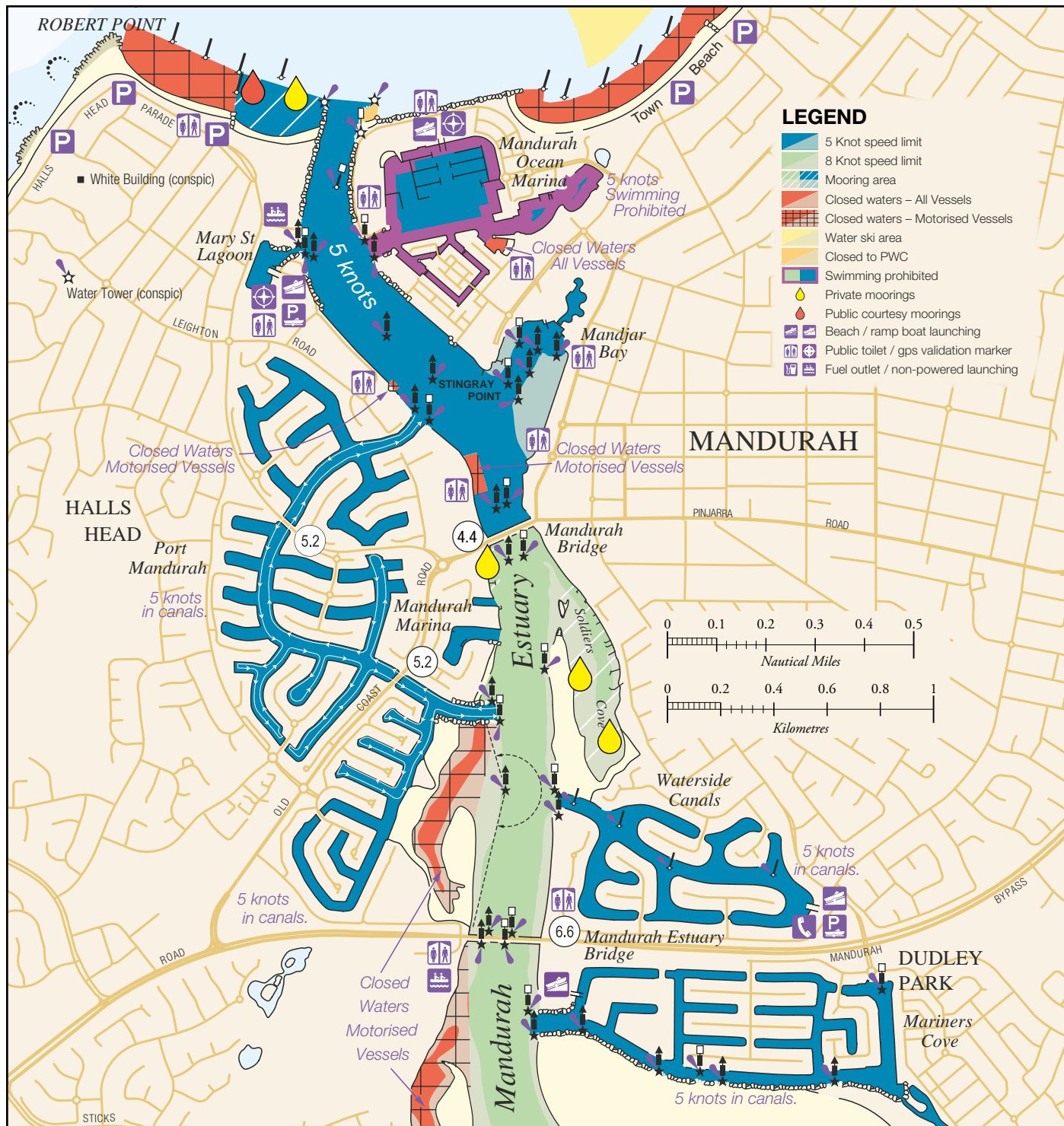
For further information go to www.transport.wa.gov.au/boatingguides or scan the QR Code



Join us at facebook.com/MarineSafetyWA

The information contained in this publication is provided in good faith and believed to be accurate at time of publication. The State shall in no way be liable for any loss sustained or incurred by anyone relying on the information.





Traffic flow

All vessels are to stay to the right of channels and avoid crossing channels to enter opposite canal entries. All vessels must turn right when entering and exiting the canals to avoid crossing situations and collisions.

General speed limit restrictions

It is illegal, in any navigable waters to drive a motor boat at a speed exceeding 8 knots:

- through an arch of a bridge;
- in or through a mooring area;
- within 15 metres of a vessel underway;
- within 50 metres of -
 - (i) a moored vessel;
 - (ii) a person in the water;
 - (iii) a jetty or wharf;
 - (iv) a river bank or low water mark.

Wake and wash

Vessels must travel at idle speed to ensure wash is reduced and kept at a minimum.

Anchoring

Anchoring is not permitted within the canal areas. Please keep the channels clear.

Safety equipment

- bucket or bailer;
- fire extinguisher if you have an in board engine or cooking appliances on board;
- lifejackets for all on board, (ensure that they are a suitable size if carrying children);
- flares; and
- check navigation lights and carry spare bulbs and fuses.

Alcohol

It is an offence to operate a vessel under the influence of alcohol.

On water patrols

Marine Officers and Water Police will be patrolling the area; so if you are unsure of anything feel free to wave a patrol vessel down for assistance. Officers can also be contacted on Channel 9 VHF or Channel 96 on 27MHz.

Courtesy

Navigation of the many canals at Mandurah is increasingly busy, particularly at Christmas to view the lights on display. Canals easily become congested and skippers are required to be patient and courteous.

Recreational Skipper's Ticket

The person in charge of a recreational vessel with a motor of 6hp or less is not required to hold a Recreational Skipper's Ticket (RST).

A person in charge of a recreational vessel with a motor greater than 6hp is required to hold a RST.

You are required to carry your RST card when boating.

Age restrictions

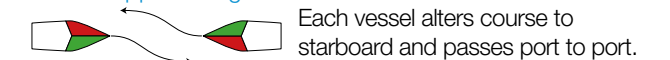
A person under 10 years may not drive a motor boat.

RST holders over 14 but under 16 years of age are restricted to operating during daylight hours at a speed less than 8 knots.

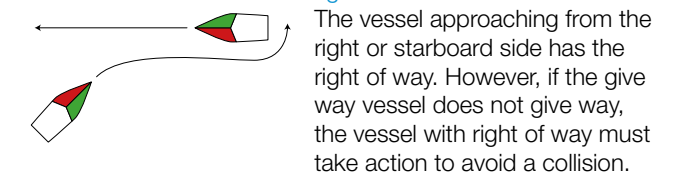
Collision regulations

- You must keep a good lookout and be ready to give way to other vessels if necessary.
- If you must give way, do so early and make a move which will be obvious to the other vessel.
- Always keep to the right hand side of channels.
- The golden rule: "look to the right, give way to the right, turn to the right and stay to the right".

Vessels approaching head on

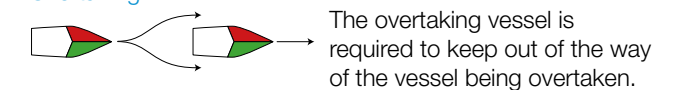


Power driven vessels crossing



This rule does not relieve the give way vessel of its obligation to keep clear.

Overtaking



This applies to both sail and power boats. If a sailing vessel is overtaking a power boat the sailing boat must keep out of the way of the power boat until it is past and clear.