

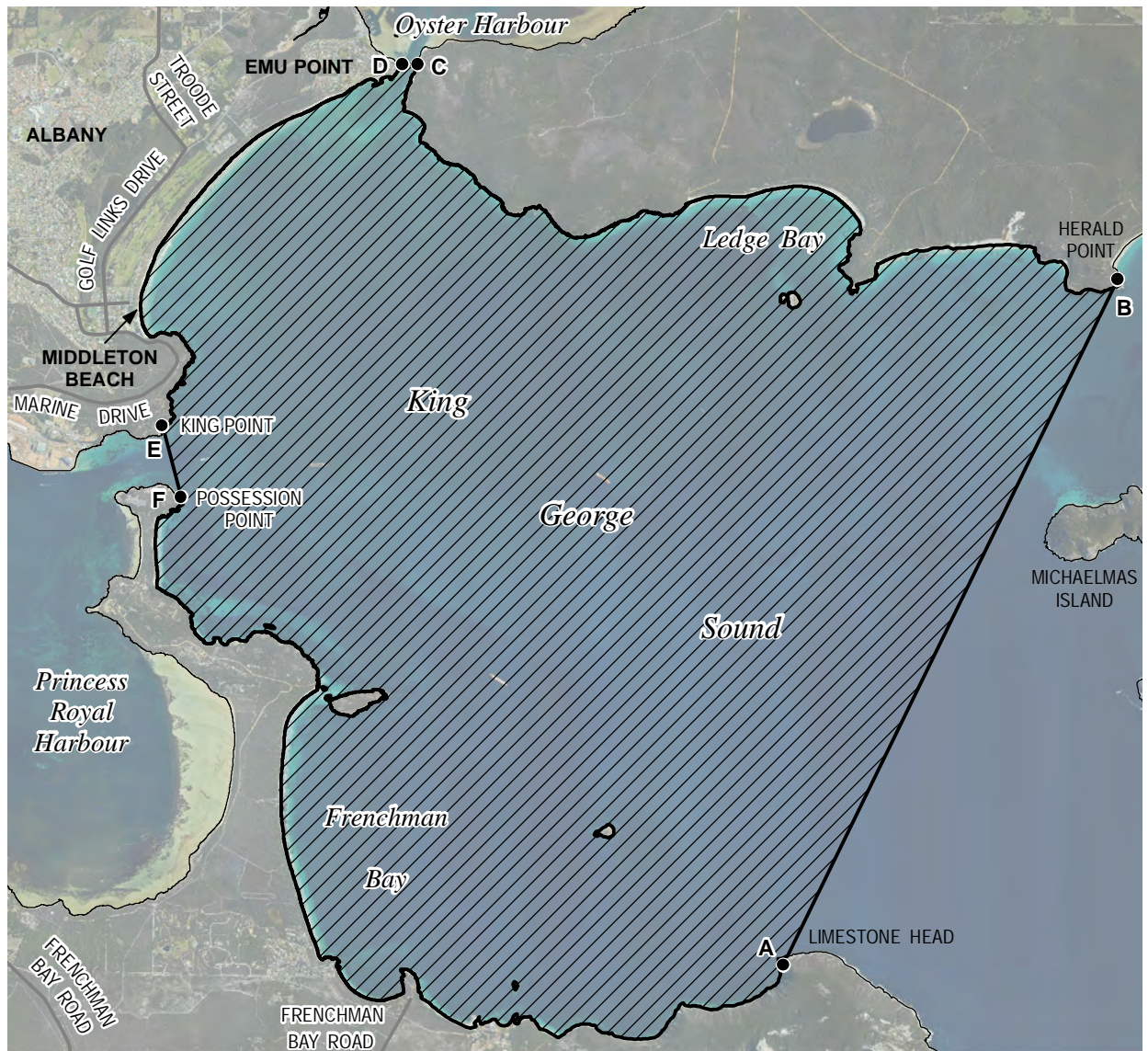
LIMIT OF PARTIALLY SMOOTH WATERS ALBANY

KING GEORGE SOUND NORTH AND WEST OF A LINE JOINING LIMESTONE HEAD (35°5.327'S, 117°59.790'E)
AND HERALD POINT (35°1.144'S, 118°2.208'E).

THE WATERS ARE SHOWN HATCHED ON THE WESTERN AUSTRALIAN DEPARTMENT OF TRANSPORT PLAN 846-17-03.

BOUNDARY COORDINATES DATUM GDA94

Node	LATITUDE (SOUTH)	LONGITUDE (EAST)
A	35° 05.327'	117° 59.790'
B	35° 01.144'	118° 02.208'
C	34° 59.886'	117° 57.031'
D	34° 59.886'	117° 56.919'
E	35° 02.093'	117° 55.174'
F	35° 02.523'	117° 55.319'



Legend

Partially Smooth Waters

LANDGATE AERIAL PHOTOGRAPHY FEBRUARY 2017

PREPARED BY
CARTOGRAPHIC SERVICES
1 ESSEX STREET FREMANTLE

Drawn by: S Salgado
Date: 24 November 2017

Examined by Manager Cartography:
R. Talbot-Smith: *R. Talbot-Smith*
Date: *24th November 2017*



PLAN 846 - 17 - 03