

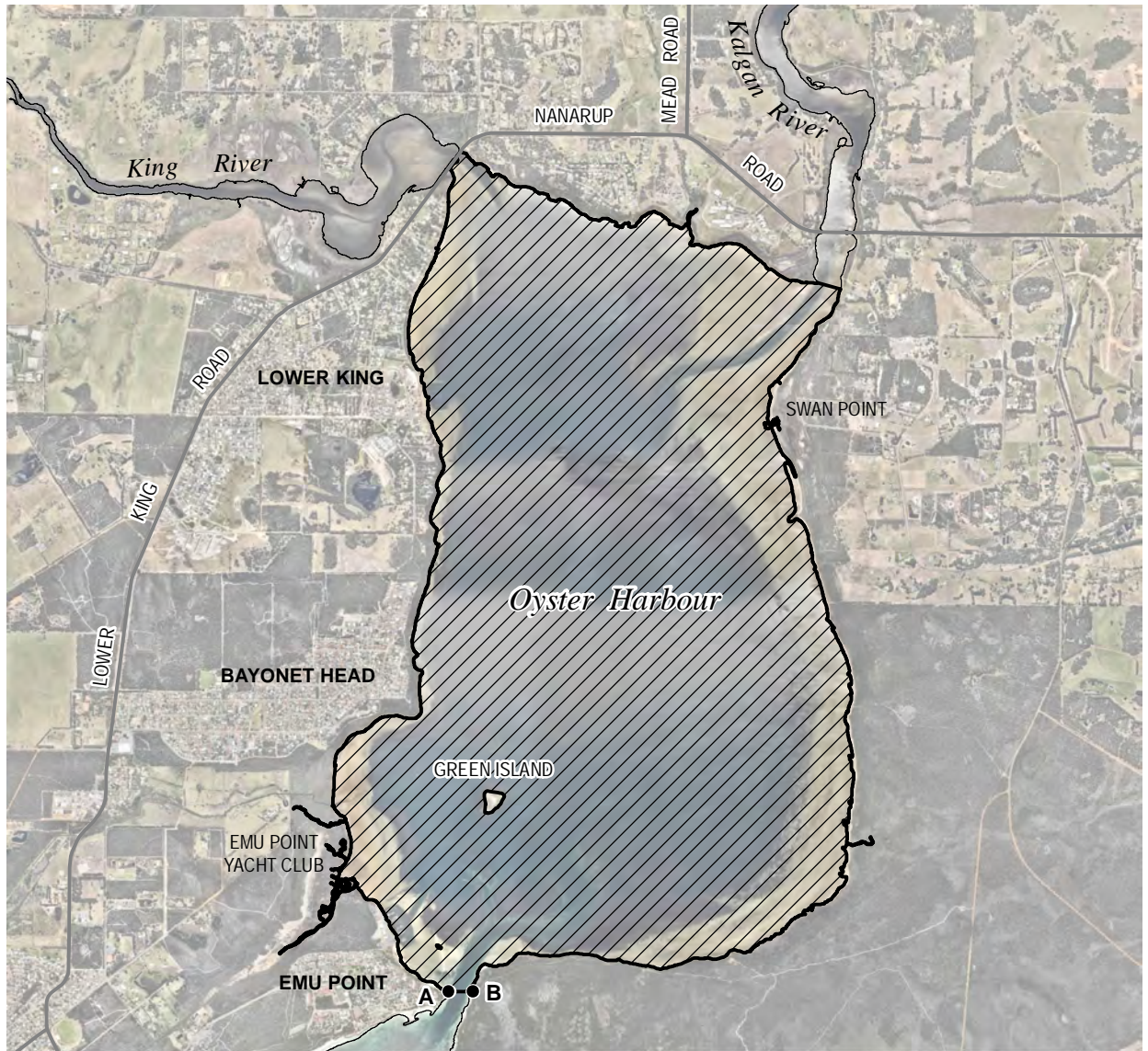
LIMIT OF SMOOTH WATERS ALBANY OYSTER HARBOUR

OYSTER HARBOUR NORTH OF THE LATITUDE OF EMU POINT (34°59.886'S).

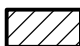
THE WATERS ARE SHOWN HATCHED ON THE WESTERN AUSTRALIAN DEPARTMENT OF TRANSPORT PLAN 846-18-03.
ALL INLAND RIVERS ARE CONSIDERED SMOOTH WATERS.

BOUNDARY COORDINATES DATUM GDA94

Node	LATITUDE (SOUTH)	LONGITUDE (EAST)
A	34° 59.886'	117° 56.919'
B	34° 59.886'	117° 57.031'



Legend

 Smooth Waters



NEARMAP AERIAL PHOTOGRAPHY FEBRUARY 2017

PREPARED BY
CARTOGRAPHIC SERVICES
1 ESSEX STREET FREMANTLE

Drawn by: S Salgado
Date: 24 November 2017

Examined by Manager Cartography:
R. Talbot-Smith: *R. Talbot-Smith*
Date: *24th November 2017*