



ONE MILE JETTY, CARNARVON

SALVAGED MATERIAL RECORD

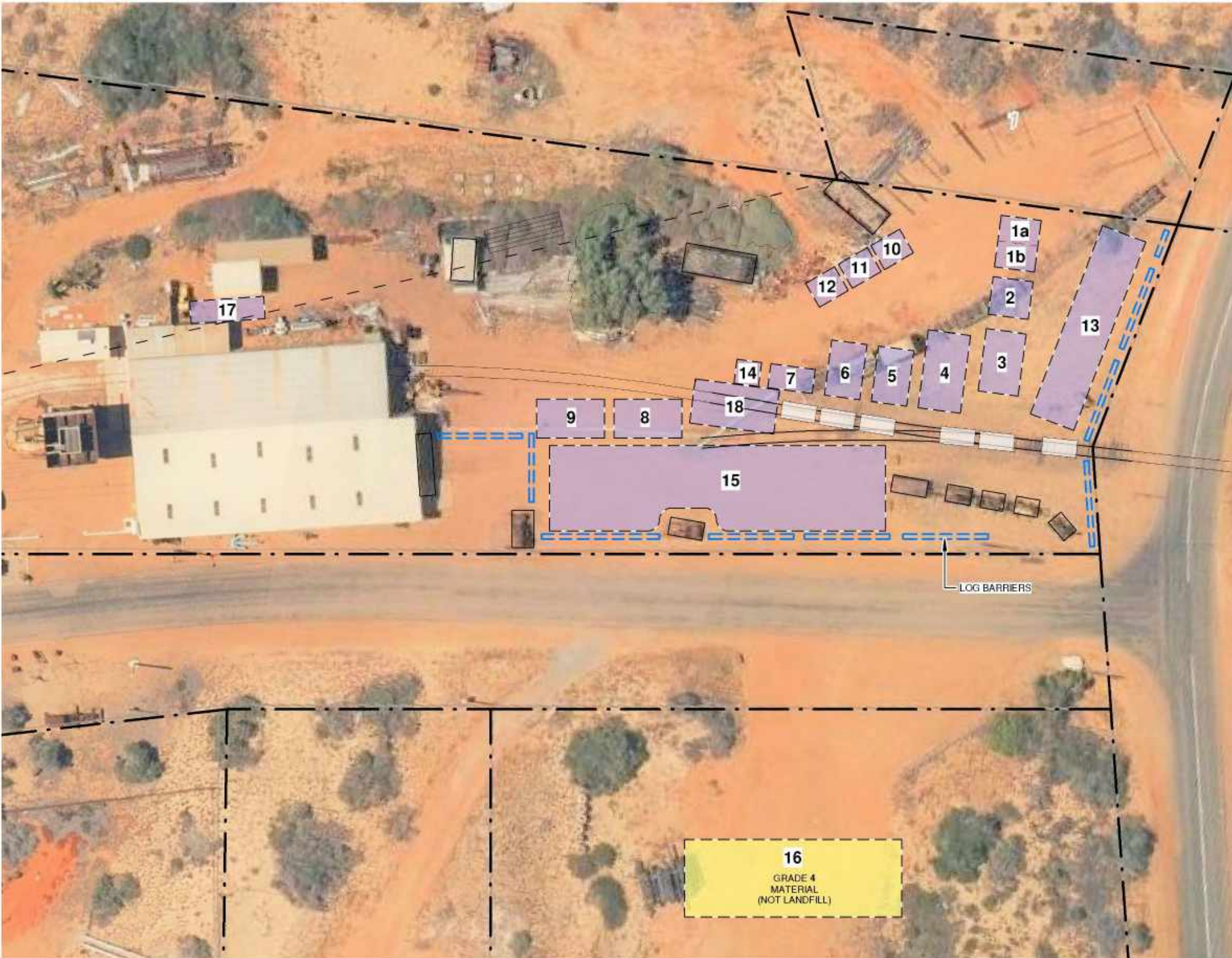
[Summary](#)

Record of timber and steel components salvaged during the de-construction of the One Mile Jetty.
March 2022

SUMMARY (SALVAGED TIMBER ONLY)

STACK NUMBER	QUANTITY	GRADE
1	15.6m3	1 & 2
2	9.3m3	1 & 2
3	17m3	2
4	66.5m3	1
5	42.35m3	2
6	32.275m3	2
7	20m3	3
8	30.74m3	3
9	10m3	3
10	4m3	3
11	5.6m3	3
12	6m3	3
13	101m3	3
14	0.8m3	2
15	220m3	4
16	442m3	4

TOTAL QUANTITY	1023m3
GRADE 1 & 2 TOTAL	284.8m3
GRADE 3 TOTAL	76.34m3
GRADE 4 TOTAL	662m3



REFERENCE PLAN SHOWING STACK LOCATIONS

NOT TO SCALE

STACK 1 DECK BOARDS (210/220mm W x 70/75mm H) in variable lengths Boards are typically strapped in packs of 16 (4 boards high x 4 boards wide) but shorter lengths packed in bigger packs	QUANTITY Total : 340 deck boards Approx volume: 7.5m3 Type 1A Approx volume : 8.1m3 Type 1 B
4000mm long lengths (typical) – marked as type 1A	8 x packs of 16 boards (4 boards high x 4 boards wide) = 128 boards
2400mm – 3000mm lengths – marked as type 1B	7 x packs of 16 boards (4 boards high x 4 boards wide) 2 x packs of 28 boards (7 boards high x 4 boards wide) 1 x pack of 24 boards (6 boards high x 4 boards wide) 1 x pack of 20 boards (5 boards high x 4 boards wide) = 212 boards



<p>STACK 2 CORBELS (290/330mm H x 190/300mm W) in 1200-2300mm lengths Corbels are typically strapped in pairs or packs of 4 Marked as type 2A</p>	<p>QUANTITY Total : 49 pieces (type 2A) Approx volume: 6.3m3 (based on average dimensions) type 2A</p>
<p>HALF CAPS (280/330mm H x 140/190mm W) in 1900 – 3100mm lengths Marked as type 2B</p>	<p>Total : 11 pieces (type 2B) Approx volume: 2.5m3 (type 2B)</p>
<p>HALF CAPS (290mm H x 270mm W) in 3000mm lengths Marked as type 2C</p>	<p>Total : 2 pieces (type 2C) Approx volume: 0.469m3 (type 2C)</p>



STACK 3 CORBELS (290mm H x 270mm W) in 1400-1600mm lengths Marked as type 3A	QUANTITY Total : 21 pieces (type 3A) Approx volume: 2.46m3 (type 3A) based on average dimensions
HALF CAPS (280/300mm H x 140/190mm W) in 1500 – 2500mm lengths Marked as type 3B	Total : 26 pieces (type 3B) Approx volume: 2.56m3 (type 3B) based on average dimensions
HALF CAPS (290mm H x 200mm W) in 2100- 3500mm lengths Marked as type 3C	Total : 74 pieces (type 3C) Approx volume: 12m3 (type 3C) based on average dimensions



<p>STACK 4 RAIL BEAMS (250mm H x 330mm W) in 6200-6400mm lengths Marked as type 4A</p>	<p>QUANTITY Total : 23 pieces (type 4A) Approx volume: 11.95M3 (type 4A) based on average dimensions</p>
<p>STRINGERS (330mm H x 200mm W) in 3800 – 6200mm lengths Marked as type 4B. Most are longer lengths, not short lengths. Some are still paired but pieces are counted individually</p>	<p>Total : 141 pieces (type 4B) Approx volume: 54m3 (type 4B) based on average long dimensions (5.8m average)</p>
<p>LARGE STRINGER (400mm H x 220mm W) in 5600mm length Marked as type 4C</p>	<p>Total : 1 piece (type 4C) Approx volume: 0.5m3 (type 4C)</p>







STACK 5 STRINGERS (280mm H x 150mm W) in 3300-4100mm lengths Marked as type 5A	QUANTITY Total : 4 pieces (type 5A) Approx volume: 0.6 m3 (type 5A) based on average dimensions
STRINGERS (280mm H x 150mm W) in 5200 – 6200mm lengths Marked as type 5B	Total : 166 pieces (type 5B) Approx volume: 40m3 (type 5B) based on average long dimensions (5.7m average)
STRINGERS (330mm H x 190/240mm W) in 6200mm length Marked as type 5C	Total : 4 pieces (type 5C) Approx volume: 1.75m3 (type 5C)





STACK 6 HALF CAPS (330mm H x 190mm W) in 3100-3400mm lengths Marked as type 6A	QUANTITY Total : 4 pieces (type 6A) Approx volume: 0.8 m3 (type 6A) based on average dimensions
STRINGERS (280mm H x 150mm W) in 3100-3400 lengths Marked as type 6B	Total : 6 pieces (type 6B) Approx volume: 0.8m3 (type 6B) based on average dimensions
EXTRA WIDE DECK BOARDS (290-300mm W x 70mm H) approx. 3700mm lengths Marked as type 6C	Total : 9 pieces (type 6C) Approx volume: 0.675m3 (type 6C)
DECK BOARDS (220mm W x 70/75mm H) approx. 3000 – 3700mm lengths Marked as type 6D	Total: 575 pieces (type 6D) 35 x packs of 16 boards (4 boards high x 4 boards wide) 15 x loose boards (not strapped in a pack) Approx volume: 30m3 (type 6D)

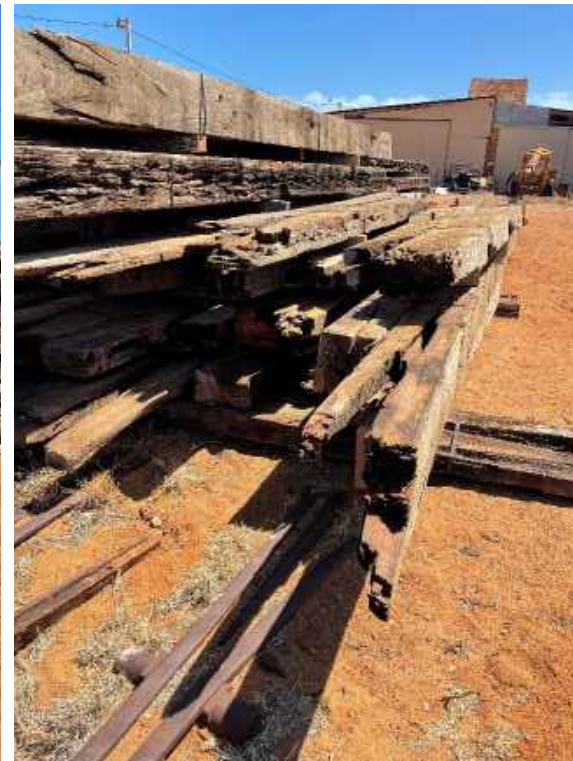




<p>STACK 7 REPLACEMENT PILES (230-400mm diameter) in 6000-7000mm lengths No carpenter marks (not original or early piles). Marked as 7A</p>	<p>QUANTITY Total : 22 pieces (type 7A) Approx volume: 11.14 m3 (type 7A) based on average dimensions</p>
<p>REPLACEMENT PILES (450-600mm diameter) in 6000-7000mm lengths Marked as type 7B</p>	<p>Total : 7 pieces (type 7B) Approx volume: 9m3 (type 6B) based on average dimensions</p>



STACK 8 RAILWAY BEAMS (330mm H x 250mm W) in 5500-6200mm lengths Marked as type 8A	QUANTITY Total : 12 pieces (type 8A) Approx volume: 5.74 m3 (type 8A) based on average dimensions
STRINGERS (280mm H x 150mm W) in 5500-6200mm lengths Marked as type 8B	Total : 50 pieces (type 8B) Approx volume: 23.9m3 (type 8B) based on average dimensions
HALF CAPS (190mm W x 330mm H) approx. 3500-5000mm lengths Marked as type 8C	Total : 4 pieces (type 8C) Approx volume: 1.1m3 (type 8C)



STACK 9 RAILWAY BEAMS (330mm H x 250mm W) in 5500-6200mm lengths Marked as type 9A	QUANTITY Total : 4 pieces (type 9A) Approx volume: 1.91 m3 (type 9A) based on average dimensions
STRINGERS (280mm H x 150mm W) in 5500-6000mm lengths Marked as type 9B	Total : 12 pieces (type 9B) Approx volume: 3m3 (type 9B) based on average dimensions
HALF CAPS (190-200mm W x 330mm H) 5500-6000mm lengths Marked as type 9C	Total : 14 pieces (type 9C) Approx volume: 5.3m3 (type 9C)
HANDRAIL & KERBRAIL (100mm W x 100mm H) approx. 2000 – 6000mm lengths Most are longer lengths	Total: 14 pieces (type 9D) Approx volume: 0.7m3 (type 9D) based on 5m lengths average



STACK 10

ASSORTED MEMBERS IN VARIABLE LENGTHS, MOST 3000mm LONG
TIMBER IS LOOSE OR STRAPPED

QUANTITY

Total : 33 pieces
7 x pieces (deck boards)
16 x pieces (stringers)
1 x piece (rail beam)
6 x pieces (kerb rail)
3 x pieces (half caps)
Approx volume: 4m3



STACK 11 STRINGERS (280mm H x 150mm W) in 3000-7000mm lengths Marked as type 11A	QUANTITY Total : 71 pieces (type 11A) Approx volume: 15 m3 (type 11A) based on average 5m length
HALF CAPS (190-200mm W x 330mm H) 3000-7000mm lengths Marked as type 11B	Total : 2 pieces (type 11B) Approx volume: 0.6m3 (type 11B) based on average dimensions



STACK 12

DECK BOARDS (220mm W x 70mm H) in 1800-3000mm lengths
Marked as type 12A

QUANTITY

Total : 160 pieces (type 12A)
10 x packs of 16 deck boards (4 boards H x 4 boards W)
Approx volume: 6 m3 (type 11A) based on average 2.4m length



STACK 13 (ORIGINAL/EARLY PILES – GRADE 1)
PILES (400-600mm diameter) typically 3000-6000mm lengths

QUANTITY
Total : 115 pieces (type 13)
Approx volume: 101 m3 (type 13) based on average 4.5m length





STACK 14

BALUSTRADE POSTS (100mm H x 100mm W) in approx. 1000mm lengths
Strapped in packs of approx. 24 posts

QUANTITY

Total : 80 pieces (type 14)
Approx volume: 0.8 m3 (type 14)



STACK 15 (GRADE 4 MATERIAL)
STOCKPILE OF BROKEN LENGTHS OF ALL SECTION SIZES
STORED INSIDE CARNARVON HERITAGE PRECINCT YARD

QUANTITY
Approx volume: 220 m3 (based on stockpile footprint of approx. 28m x
6m x 1.3m high)



STACK 16 (GRADE 4 MATERIAL)
STOCKPILE OF BROKEN LENGTHS OF ALL SECTION SIZES
STORED ON BUS BAY OPPOSITE CARNARVON HERITAGE PRECINCT YARD

QUANTITY
Approx volume: 442 m3 (based on stockpile footprint of approx. 20m x 17m x 1.3m high)



STACK 17 (GRADE 1 MATERIAL)
STOCKPILE OF SALVAGED BOLLARDS, BOLLARD PILES, BOLTS & SPIKES
(smaller items stored in crates)

QUANTITY
5 x BOLLARD PILE ASSEMBLIES
5 X CRATES OF BOLTS & SPIKES



STACK 18 (GRADE 1 MATERIAL)
STOCKPILE OF SALVAGED STEEL RAIL LINE
Lengths are bent and corroded

QUANTITY
Approx volume: 30 m3 (based on stockpile footprint of approx. 5m x 6m x 1m high)

