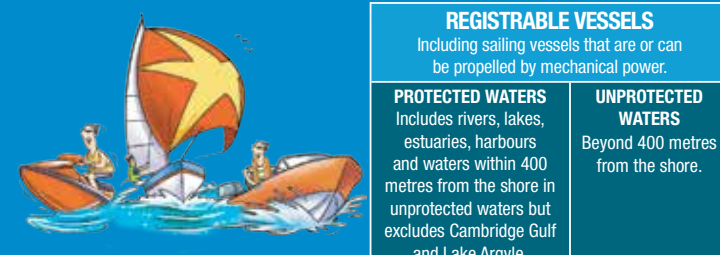


# Boating Guide Coral Bay Marine Safety

## SAFETY EQUIPMENT REQUIREMENTS



	REGISTRABLE VESSELS Including sailing vessels that are or can be propelled by mechanical power.	
	PROTECTED WATERS Includes rivers, lakes, estuaries, harbours and waters within 400 metres from the shore in unprocted waters but excludes Cambridge Gulf and Lake Argyle.	UNPROTECTED WATERS Beyond 400 metres from the shore.
<b>Recreational Skipper's Ticket</b> The skipper of a recreational vessel, powered by a motor greater than 6 horsepower must hold an RST.	✓	✓
<b>Lifejacket Carriage</b> A lifejacket, as indicated in the table opposite, must be carried for every person on board.	Vessels smaller than 4.8m ✓ Minimum Level 100 MUST BE CARRIED	Vessels 4.8m and larger ✓ Minimum Level 100 MUST BE CARRIED
	Children older than one and younger than 12 ✓ Minimum Level 100 MUST BE CARRIED	Children older than one and younger than 12 ✓ Minimum Level 100 MUST BE CARRIED
<b>Lifejacket Wearing</b> As indicated in the table opposite.	Personal Water Craft ✓ Minimum Level 50S MUST BE WORN	Personal Water Craft ✓ Minimum Level 50S MUST BE WORN
	<b>Distress Beacon (in-date)</b> A GPS enabled 406 MHz EPIRB OR if worn by at least one person, a GPS enabled PLB. Distress beacons must be in-date and registered with AMSA.	RECOMMENDED
<b>Red and Orange Flares (in-date)</b> At least two hand held red flares and two hand held orange flares must be carried. OR <b>Electronic Visual Distress Signal</b> An electronic signalling device may be carried in lieu of flares IF a GPS enabled EPIRB or PLB (must be worn) is also carried.	RECOMMENDED	✓
	<b>Marine Radio</b> A HF or VHF marine radio on any Registrable Vessel when operating more than 4 nautical miles from shore in unprocted waters.	RECOMMENDED
<b>Recommended Additional Safety Equipment</b> It is recommended an anchor and line, a fire extinguisher and a means of removing water be carried.	RECOMMENDED	RECOMMENDED

**Contact details**  
Department of Transport  
Email: Ed.Boat@transport.wa.gov.au  
Website: www.transport.wa.gov.au/imarine  
Exmouth Office: 9216 8219  
Carnarvon Office: 9941 6800  
Coral Bay Maritime Facility Manager: 0427 848 655  
Marine Safety Hotline: 13 11 56

**Police**  
Emergency: 000  
Water Police: 9442 8600  
Exmouth Police: 9947 8700

**Department of Fire and Emergency Services**  
Marine Rescue Western Australia  
Emergency contact: VHF 16  
Marine Rescue Exmouth  
Marine Rescue Carnarvon  
Marine Rescue Coral Bay

**Boating Weather Forecasts**  
Boating weather: 1300 815 916  
Website: www.bom.gov.au

**Department of Biodiversity, Conservation and Attractions**  
Website: www.dbca.wa.gov.au

**DECKEE** Boating in WA just got smarter. Download the free Deckee app.

**DoT Direct** anywhere, anytime! Save time and go online today

Join us at facebook.com/MarineSafetyWA

For further information go to www.transport.wa.gov.au/boatingguides or scan the QR Code

The information contained in this publication is provided in good faith and believed to be accurate at time of publication. The State shall in no way be liable for any loss sustained or incurred by anyone relying on the information.  
16-08-02-SER-0423-WEB-S1



# Coral Bay Maritime Facility

**Code of conduct**  
The Coral Bay Maritime Advisory Committee in conjunction with the commercial operators, recreational users and the Coral Bay community has developed a Code of Conduct for the facility. A copy of the Code is available from the Facility Manager or can be downloaded from: www.transport.wa.gov.au/imarine/coral-bay-facility.asp

The underlying principle of the Code ensures that the Coral Bay Maritime Facility (CBMF) community extends courtesy and consideration to all users of the facility.

- To assist, the following rules have been agreed:
- Fishing from the jetty must not obstruct movement of vessels.
  - Only commercial vessel operators are permitted to park on the island or causeway. This is restricted to loading/unloading for a maximum period of 20 minutes.
  - Camping or living in vehicles is prohibited at the facility, both on the island and the trailer/car park.

Educational and informative signage has been provided to assist people to understand the correct behavioural requirements at the facility.

The months from November to April (inclusive) are the cyclonic season in the North West of WA. A Coral Bay Maritime Facility Cyclone Contingency Plan is available from the Facility Manager or from www.transport.wa.gov.au/imarine/coral-bay-facility.asp

**Moorings**  
Transport has installed two transfer moorings at the CBMF. Two moorings located immediately to the north of the commercial jetty are not available for use by recreational vessels. These are reserved for commercial operators. Two others located to the west of the CBMF are generally provided for commercial operators although some private or recreational vessel use is permitted.

The white mooring buoys are distinctive and display CT01 to CT04. Please contact the Facility Manager for further information. Fees are payable for the use of the two westerly transfer moorings.

Transport has installed a series of tender moorings on and around the CBMF. These are predominantly utilised by commercial operators and government agencies. Recreational vessels are not permitted to use the tender moorings without the explicit approval of the Facility Manager.

**Entry onto island facility**  
Boaters are expected to rig their vessels while in the trailer/car park to reduce time spent launching on the island.

Boaters are required to stop before entering the island to allow departing vehicles and trailored vessels to leave as they have right of way.

Boat trailers with a low draw-bar may damage the top of the boat ramp surface. A recee-hitch is available for loan from the Facility Manager to reduce the risk of this type of damage.

Boaters are asked to avoid "driving" their vessels onto the trailer (ie, use the winch), particularly at low tides to reduce the chance of subsidence at the base of the concrete ramp blocks.

Once a vessel is removed from the water drivers are to immediately proceed to the de-rigging area provided at the top car park.

People should not be in a vessel being towed by a vehicle over the causeway or roads, as the practice is illegal and very dangerous.

**Speed limit**  
A 5 knot speed limit applies to all waters around the CBMF.

A 5 kph speed limit applies on the causeway and in the trailer/car park.

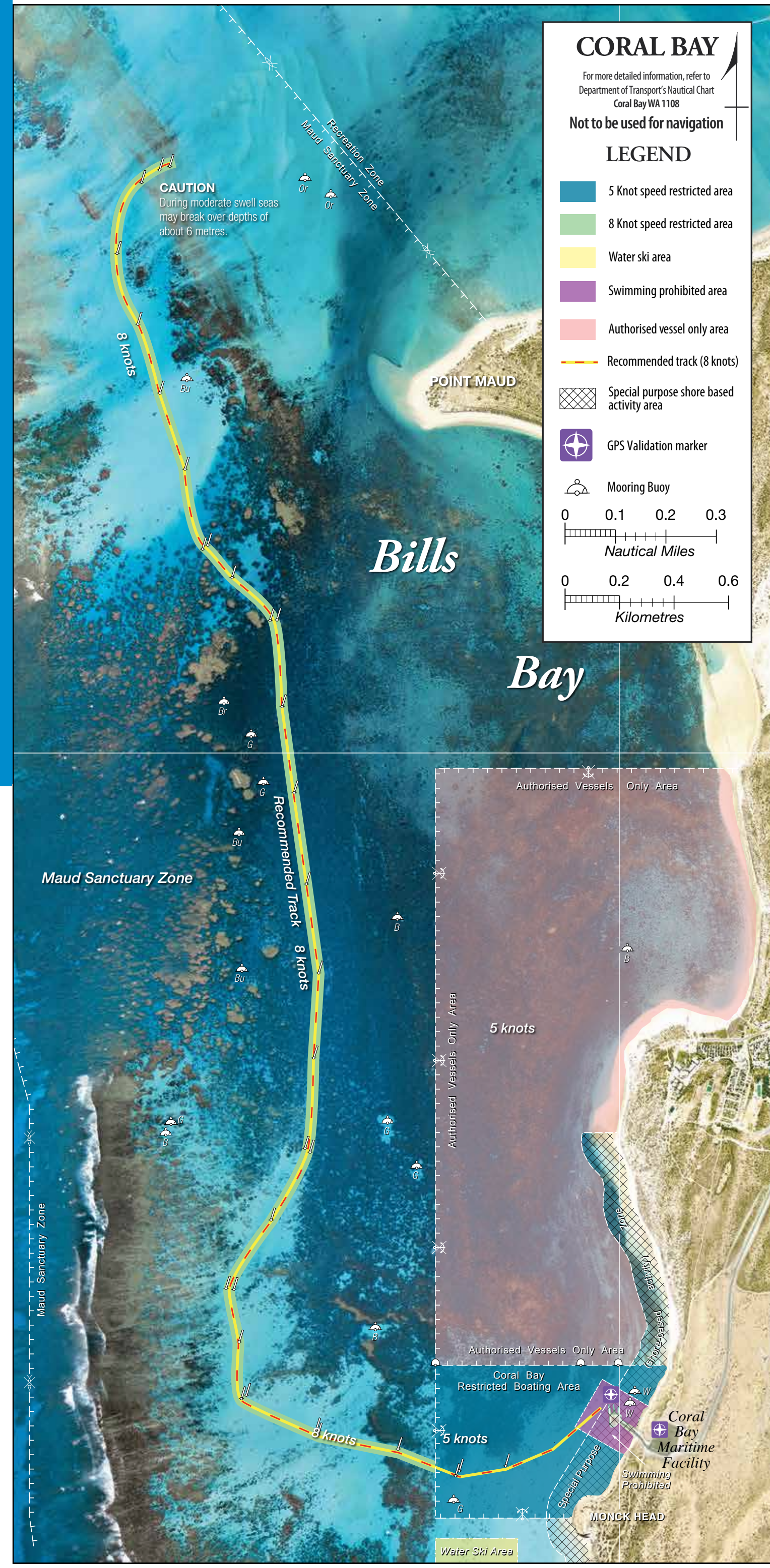
**Fuelling recreational vessels**  
Fuelling of vessels with inflammable fuels such as ULP is not permitted at either the trailer/car park or on the island facility.

Fuelling of recreational vessels with diesel is permitted under strict conditions. Boaters are required to seek approval from the Facility Manager to ensure the fuelling is carried out legally.

Fuelling of vessels is not permitted during peak periods – liaise with Facility Manager if required.

**Rubbish removal**  
Littering from boats is not permitted. All rubbish and waste is to be brought back to the facility and taken to the landfill site.

**Fish cleaning**  
Fish cleaning is only permitted at the facility adjacent to the public toilets in Robinson Street in town.



# Coral Bay

**Coral Bay Restricted Boating Area**  
Coral Bay is a popular access point for boaters to the Marine Park. A boating strategy has been developed in response to the increasing pressure on this area.

The waters adjacent to the Coral Bay Maritime Facility (CBMF) are a 5 Knot Restricted Area (see map) and the following conditions apply:

- no anchoring (including beach anchoring);
- no processing of fish;
- draft limit of 1.2 metres; and
- once vessels are clear of the Coral Bay restricted boating area they can proceed at 8 knots for the length of the channel.

**Authorised Vessels Only Area**  
Only vessels that have lawful authority from Parks and Wildlife can enter the Authorised Vessels Only Area. The southern boundary of the Authorised Vessels Only Area, (approx 200 metres north of the CBMF), is marked with in-water buoys.

**Recreational fishing**  
The Department of Fisheries licenses and regulates recreational fishing in regard to bag and size limits at Coral Bay.

- Refer to the Ningaloo Marine Park Zoning section overleaf for the areas where fishing is permitted and prohibited within the Marine Park. Brochures with more specific information on fishing regulations are available from the Parks and Wildlife Information Centre and the Department of Fisheries.
- Fishing is not permitted on any jetty where it interferes with the movement and operations of vessels.
- Cleaning, scaling, gutting and filleting of fish is not permitted at the CBMF or within the 5 Knot Restricted Area and the Authorised Vessels Only Area.
- Fish cleaning facilities are available in town adjacent to the public toilet facilities in Robinson Street.

## Parks and Wildlife public moorings at Coral Bay

As there are no private recreational use moorings allowed at Coral Bay, Parks and Wildlife have provided a number of public day and overnight moorings for use in the Maud Sanctuary Zone.

Public moorings are identified by coloured buoys (see table below) – please enquire at the Parks and Wildlife Information Centre in Coral Bay for more information. There is also advice and information provided on the mooring float.

To book an overnight mooring please call Parks and Wildlife Exmouth on 9947 8000.

Please remember that the different coloured moorings are designed for different vessels and different conditions. Ensure the mooring you select is suitable for your vessel, and comply with the information displayed on the mooring float.

You are responsible for the safety of your vessel while using the moorings.

All day use moorings are rated to a maximum wind strength of 30 knots, overnight moorings are rated to 45 knots

**Public mooring table**

Colour coded float	Maximum vessel length	Maximum wind strength
Black	Kayaks only	30 knots
Brown	8 metres	30 knots
Green	12 metres	30 knots
Blue	18 metres	45 knots, overnight
Orange	25 metres	45 knots



