

Boating Guide Bunbury Marine Safety



September 2025

Recreational Skipper's Ticket

A person in charge of a recreational vessel with a motor of **6 horsepower or less** is not required to hold a Recreational Skipper's Ticket (RST).

A person in charge of a recreational vessel with a motor **greater than 6 horsepower** is required to hold an RST and carry it when boating.

Age restrictions

You must be 14 years or older to apply for an RST.

RST holders over 14 but under 16 years of age are restricted to operating during daylight hours at a speed less than 8 knots.

Interstate skipper's tickets

If you hold a current interstate ticket, recognised by the Department, and are visiting or permanently relocating to WA, you have three months to have the qualification recognised.

You **must** hold an RST or equivalent to operate a vessel with a motor greater than 6 horsepower in WA, regardless of where your boat is registered.

Medical fitness

Skippers are required to alert the Department if they develop a medical condition that affects their ability to safely operate a recreational vessel. More information can be found on our website by searching Recreational Skipper's Ticket or call 13 11 56.

Obstruction of navigation aids, channels and leads

Cray pots, drop nets, fishing nets, marker buoys or other buoyed objects cannot be placed or remain in any channel or fairway in any port or harbour, or in any channel, fairway or passage in any navigable waters without the permission of the Department.

Also, you can't anchor or moor a vessel in any channel or fairway, unless the vessel is in distress.



SAFETY EQUIPMENT REQUIREMENTS

REGISTRABLE VESSELS Including sailing vessels that are or can be propelled by mechanical power.		
PROTECTED WATERS Includes rivers, lakes, estuaries, harbours and waters within 400 metres from the shore in unprotected waters but excludes Cambridge Gulf and Lake Argyle.	UNPROTECTED WATERS Beyond 400 metres from the shore.	
	✓	✓
Recreational Skipper's Ticket The skipper of a recreational vessel, powered by a motor greater than 6 horsepower must hold an RST.	✓	✓
Lifejacket Carriage A lifejacket, as indicated in the table opposite, must be carried for every person on board.	Vessels smaller than 4.8m Minimum Level 100 MUST BE CARRIED	Vessels 4.8m and larger Minimum Level 100 MUST BE CARRIED
Lifejacket Wearing As indicated in the table opposite.	Children older than one and younger than 12 Minimum Level 100 MUST BE CARRIED	Personal Water Craft Minimum Level 50S MUST BE WORN
Distress Beacon (In-date) A GPS enabled 406 MHz EPIRB OR if worn by at least one person, a GPS enabled PLB. Distress beacons must be in-date and registered with AMSA.	✓	✓
Red and Orange Flares (In-date) At least two hand held red flares and two hand held orange flares must be carried. OR Electronic Visual Distress Signal (EVDS) An electronic signalling device may be carried in lieu of flares IF a GPS enabled EPIRB or PLB (must be worn) is also carried.	RECOMMENDED	RECOMMENDED
Marine Radio A VHF or HF marine radio on any Registrable Vessel when operating more than 4 nautical miles from shore in unprotected waters.	RECOMMENDED	REQUIRED beyond 4 nautical miles RECOMMENDED within 4 nautical miles
Recommended Additional Safety Equipment It is recommended an anchor and line, a fire extinguisher and a means of removing water be carried.	RECOMMENDED	RECOMMENDED

17-09-03-01-0724

Contact details

Department of Transport and Major Infrastructure

Email: Ed.Boat@transport.wa.gov.au

Website: transport.wa.gov.au/marine

Marine Safety Hotline: 13 11 56

Police

Emergency: 000

Water Police: 9442 8600

Department of Fire and Emergency Services

Marine Rescue Western Australia

Emergency contact: VHF 16

Marine Rescue Augusta, Bunbury,

Busselton, Cape Naturaliste (Quindalup)

and Margaret River.

Boating Weather Forecasts

Boating weather: 1300 815 916

Website: bom.gov.au

Department of Primary Industries and

Regional Development

Fishwatch: 1800 815 507

Website: dpird.wa.gov.au

Department of Biodiversity, Conservation and
Attractions and Wildcare Helpline

Website: dbca.wa.gov.au



Boating in WA just got smarter.
Download the free Deckee app.

DoT Direct anywhere, anytime!
Save time and go online today



Join us at
facebook.com/MarineSafetyWA

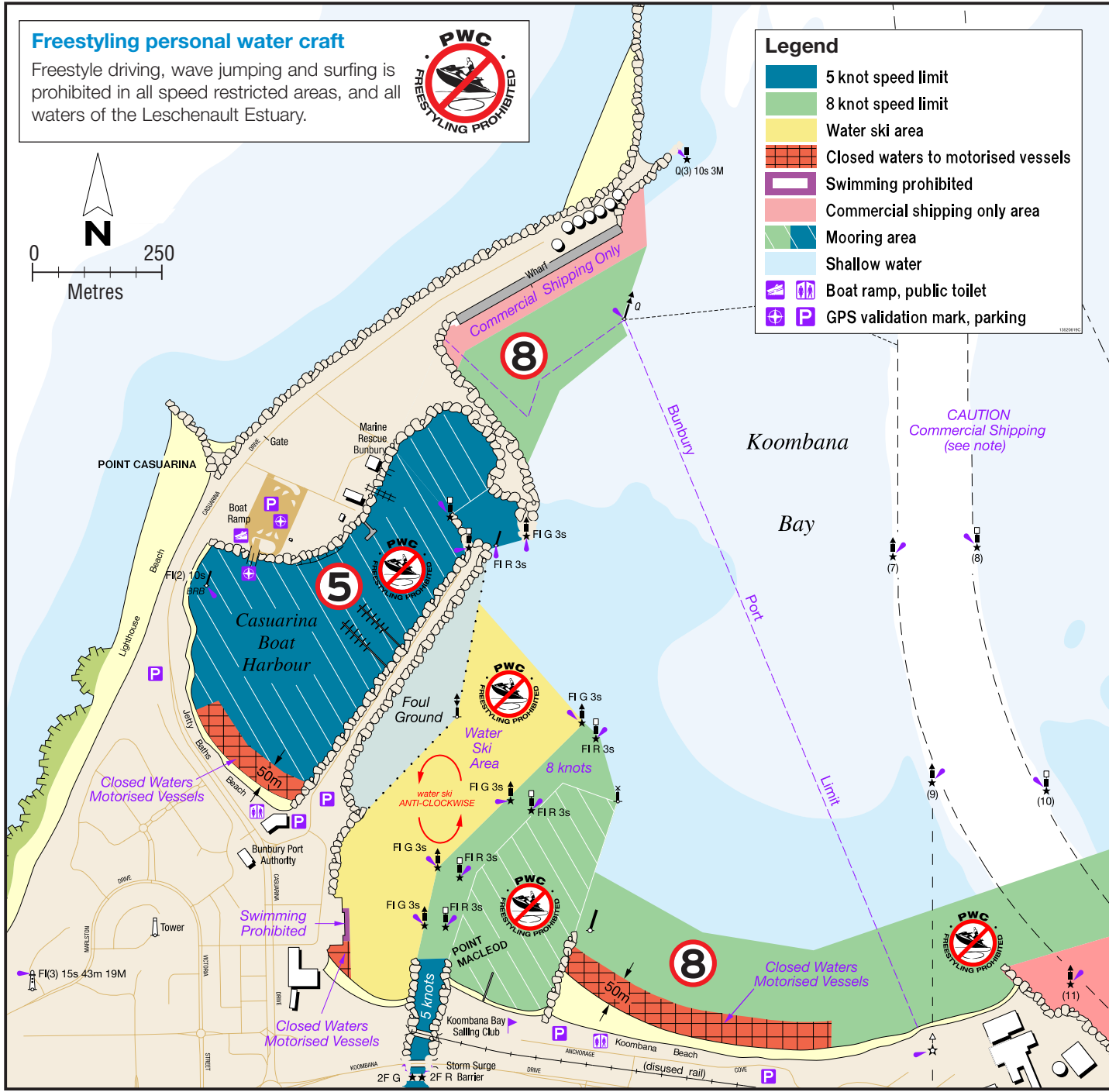


For further information go to
transport.wa.gov.au/boatingguides
or scan the QR code

The information contained in this publication is provided in good faith and believed to be accurate at time of publication. The State shall in no way be liable for any loss sustained or incurred by anyone relying on the information.
16-32-01-SER-0925-WEB



Koombana Bay Inset



Personal water craft

PWC – often called jet skis - must be registered with the Department and are subject to an annual registration fee.

PWCs are regarded as powerboats as far as the rules are concerned, meaning there are rules covering the age of skippers, safety equipment, speed and areas of operation.

You must hold an RST to operate a PWC.

Safety equipment

Every person on board a PWC must wear a lifejacket (minimum 50S) at all times.

When travelling beyond 400 metres from shore in unprotected waters you need:

- A GPS enabled EPIRB or PLB - worn
- Flares or electronic visual distress signal device (EVDS)
- Beyond 4 nautical miles from shore in unprotected waters a marine radio must also be carried.

Freestyling, wake and wave jumping

Freestyling is operating a PWC in a way that the skipper of another vessel is unable to predict your course or speed in order to avoid a collision with you.

Wave and wake jumping is driving a PWC over a wave or swell with the aim of becoming airborne.

Freestyling and wake jumping is prohibited:

- within any speed restricted area;
- within 30 metres of another PWC;
- within 50 metres of another vessel or person in the water; and
- in all water ski take-off and landing areas.



Paddle craft, kiteboarders and windsurfers

Paddle craft, kiteboarders and windsurfers operating more than 400 metres from shore are required to carry safety equipment.

For further information, please visit our website or call 13 11 56.



Navigation lights

All vessels underway during the hours of sunset to sunrise must display appropriate navigation lights for the size and type of craft.

For further information, please visit our website or call 13 11 56.

Marine alcohol and drug laws

WA Skippers navigating a vessel are subject to the same drug and alcohol limits and penalties as those in place on WA roads.



The laws apply to all types of recreational vessels including personal water craft, sailboats, dinghies and tenders.

Laws also apply to some types of motorised craft, such as electric hydrofoil boards.

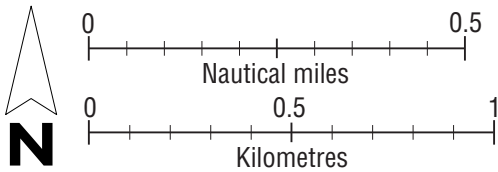
A person operating any kind of vessel will be subject to alcohol and drug testing if they are suspected of being under the influence or involved in an incident.

Bunbury

Not to be used for navigation
For more detailed information, refer to the Department of Transport and Major Infrastructure's nautical chart Bunbury Harbour and Leschenault Estuary WA 776 and Bunbury to Port Geographe WA 859



DECKEE



- Legend**
- 5 knot speed limit
 - 8 knot speed limit
 - Mooring area
 - Southern Port Authority (Bunbury) security area
 - Closed waters – Motorised vessels
 - Water ski area
 - Swimming prohibited
 - Shallow water
 - Beach / Ramp boat launching
 - Public toilet / GPS validation marker
 - Parking / Boat trailer parking
 - Fuel outlet

8 knots



An 8 knot speed restricted area exists 200 metres from the shore of Koombana Bay except within the designated water ski areas.

General speed restrictions

It is illegal, in any navigable waters, to drive a motor boat at a speed exceeding eight knots, water ski or para-sail:

- through an arch of a bridge;
- in or through a mooring area;
- within 15 metres of a vessel underway;
- within 50 metres of –
 - (i) a moored vessel;
 - (ii) a person in the water;
 - (iii) a jetty or wharf;
 - (iv) a river bank or low water mark.

Lookout

Keep 50 metres from divers and swimmers



Notices to Mariners

Before undertaking any boating activities please check the Department chart updates and Temporary Notices to Mariners list on the website transport.wa.gov.au/tntm



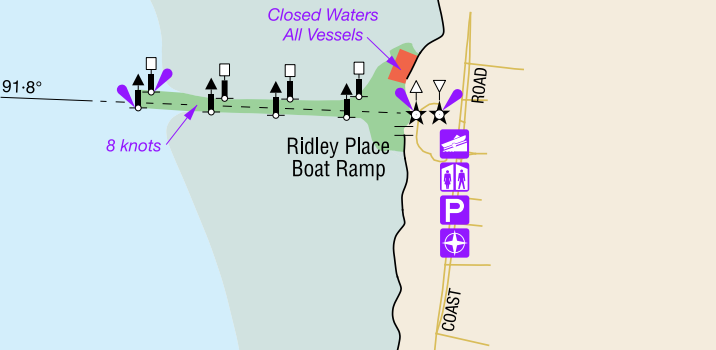
Dolphins

Approaching dolphins, including chasing, circling, or harassing them, can induce stress and disrupt their natural behaviour.

ALL vessels (including paddle craft and sailboards) must maintain a distance of 100 metres, (even if they approach). Fines of up to \$ 500, 000 apply.



Leschenault



Estuary

Freestyling personal water craft

Freestyle driving, wave jumping and surfing is prohibited in all speed restricted areas, and all waters of the Leschenault Estuary.

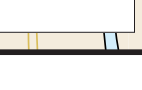
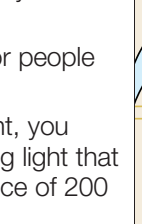
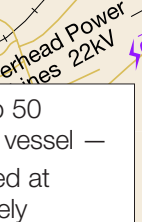
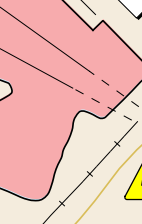
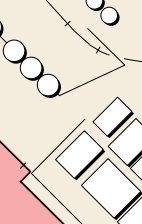
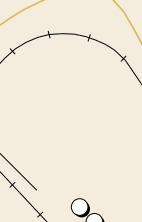
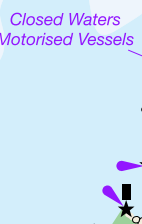


INDIAN

OCEAN

Caution The Cut

The entrance to The Cut can be extremely dangerous. Mariners are advised that breaking seas and tidal flow may be hazardous to navigation. **Navigate with caution.**



Bar Island

POINT DOURO

Foul

AUSTRALIND

Chimney

Collie River

PELICAN POINT

POINT DOURO

Foul

AUSTRALIND

Chimney

Collie River

PELICAN POINT

POINT DOURO

Foul

AUSTRALIND

Chimney

Collie River

PELICAN POINT

POINT DOURO

Foul

AUSTRALIND

Chimney

Collie River

PELICAN POINT

POINT DOURO

Foul

AUSTRALIND

Chimney

Collie River

PELICAN POINT

POINT DOURO

Foul

AUSTRALIND

Chimney

Collie River

PELICAN POINT

POINT DOURO

Foul

AUSTRALIND

Chimney

Collie River

PELICAN POINT

POINT DOURO

Foul

AUSTRALIND

Chimney

Collie River

PELICAN POINT

POINT DOURO

Foul

AUSTRALIND

Chimney

Collie River

PELICAN POINT

POINT DOURO

Foul

AUSTRALIND

Chimney

Collie River

PELICAN POINT

POINT DOURO

Foul

AUSTRALIND

Chimney

Collie River

PELICAN POINT

POINT DOURO

Foul

AUSTRALIND

Chimney

Collie River

PELICAN POINT

POINT DOURO

Foul

AUSTRALIND

Chimney

Collie River

PELICAN POINT

POINT DOURO

Foul

AUSTRALIND

Chimney

Collie River

PELICAN POINT

POINT DOURO

Foul

AUSTRALIND

Chimney

Collie River

PELICAN POINT

POINT DOURO

Foul

AUSTRALIND

Chimney

Collie River

PELICAN POINT

POINT DOURO

Foul

AUSTRALIND

Chimney

Collie River

PELICAN POINT

POINT DOURO

Foul

AUSTRALIND

Chimney

Collie River

Distress beacons, EVDS and flares must be in-date

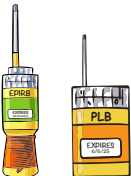
Emergency Position Indicating Radio Beacons (EPIRBs) and Personal Locator Beacons (PLBs).

When operating more than 400 metres from shore in unprotected waters you must carry:

- a GPS enabled EPIRB or PLB worn by a person on board.
- flares or electronic visual distress signal device (EVDS).

Distress beacons must be in-date and registered with Australian Maritime Safety Authority (AMSA).

For further information, please visit our website or call 13 11 56.



Bridge and powerline clearances

Clearance heights shown on this sign are in metres above highest astronomical tide (HAT). Actual clearance will vary depending on the tide and/or flood level.

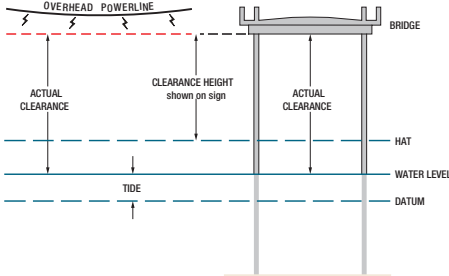
The height of the tide throughout the day will vary depending on astronomical and meteorological conditions.

Bridge clearances

Australind Bridge	2.2m
Preston River Railway Bridge	2.2m
Preston River Road Bridge	1.7m
Koombana Channel Traffic Bridge	3.6m
Koombana Channel Pedestrian Bridge	3.6m
Koombana Channel Storm Surge Barrier Foot Bridge	3.6m

Powerline clearances

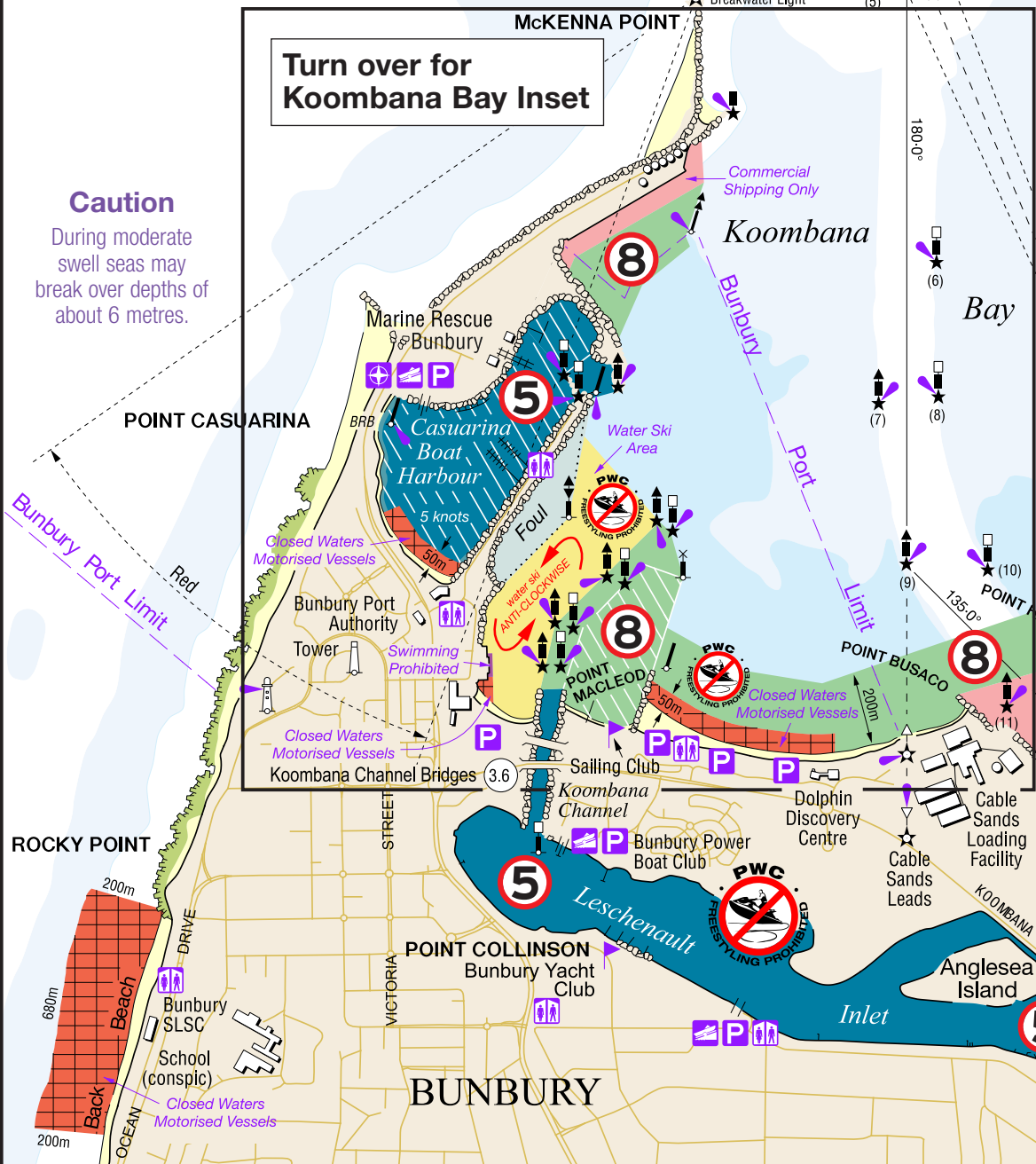
Preston River Lower	5.0m
Preston River Upper	6.2m



Caution

During moderate swell seas may break over depths of about 6 metres.

Turn over for Koombana Bay Inset



Diving

Any vessel with divers (not snorkellers) operating from it must always display signals by day or night to alert other boat users. The daytime signal for divers is an International Code Flag A. The flag must be at least 750 millimetres long and 600 millimetres wide. Divers operating without a vessel, for example from a jetty, must also display the International Code Flag A. The flag can be displayed from a buoy and

must not be less than 300 millimetres in length and 200 millimetres in width.

The flag must be clearly visible to all vessels operating in the vicinity.

Vessels to keep clear

When approaching a location or another vessel displaying the International Code Flag A or the appropriate signal during the hours of darkness, you must:

- keep your vessel at least 50 metres clear of that location or vessel; or

- where it is not possible to keep 50 metres clear of that location or vessel –
 - (i) proceed at the slowest speed at which the vessel can be safely navigated; and
 - (ii) maintain a proper lookout for people in the water.

When diving without a vessel at night, you must display a yellow-orange flashing light that can be seen from a minimum distance of 200 metres.

Southern Port Authority (Bunbury) security

Under the *Maritime Transport and Offshore Facilities Security Act 2003* all the waters contained within the Bunbury Inner Harbour and an area extending for 50 metres around all port facilities and jetties within the Bunbury Outer Harbour have been designated a Port Security Zone. Vessel access within these zones will be controlled and unauthorised vessel entry is prohibited.