

# Boating Guide

## Augusta Margaret River

### Marine Safety



August 2023

#### Recreational Skipper's Ticket (RST)

The person in charge of a recreational vessel with a motor of **6hp or less** is not required to hold a Recreational Skipper's Ticket (RST). A person in charge of a recreational vessel with a motor **greater than 6hp** is required to hold an RST. You are required to carry your RST card with you when boating.



#### Age restrictions

A person under 10 years may not drive a motor boat. RST holders over 14 but under 16 years of age are restricted to operating during daylight hours at a speed less than 8 knots.

#### Interstate skipper's tickets

If you hold a valid/current interstate ticket, recognised by DoT and you enter, as a visitor or with the intention of permanently residing in Western Australia, you have three months to have the qualification recognised. For further information visit our website or call 13 11 56.

#### General speed limit restrictions

It is illegal, in any navigable waters to drive a motor boat at a speed exceeding eight knots, water ski or para-sail:

- through an arch of a bridge;
- in or through a mooring area;
- within 15 metres of a vessel underway;
- within 50 metres of -
  - (i) a moored vessel;
  - (ii) a person in the water;
  - (iii) a jetty or wharf;
  - (iv) a river bank or low water mark.




#### Logging on and off

Skipper's are advised to log on and off with their nearest radio station every time they go out in their boats. Typically a Marine Rescue group, Australian Coast Radio Monitors (ACRM) base or Water Police. The idea being that you log on with a radio station and let them know who you are, where you are going, when you will arrive back and log off on your return.



## SAFETY EQUIPMENT REQUIREMENTS



Recreational Skipper's Ticket			
The skipper of a recreational vessel, powered by a motor greater than 6 horsepower must hold an RST.		✓	✓
	<b>Lifejacket Carriage</b> A lifejacket, as indicated in the table opposite, must be carried for every person on board.	✓ Minimum Level 100 <b>MUST BE CARRIED</b>	✓ Minimum Level 100 <b>MUST BE WORN</b>
	Vessels smaller than 4.8m		
	<b>Lifejacket Wearing</b> As indicated in the table opposite.	✓ Minimum Level 100 <b>MUST BE CARRIED</b>	✓ Minimum Level 100 <b>MUST BE WORN</b>
	Vessels 4.8m and larger		
	Children older than one and younger than 12	✓ Minimum Level 100 <b>MUST BE CARRIED</b>	✓ Minimum Level 100 <b>MUST BE WORN</b>
	Personal Water Craft	✓ Minimum Level 50S <b>MUST BE WORN</b>	✓ Minimum Level 50S <b>MUST BE WORN</b>
<b>Distress Beacon (in-date)</b> A GPS enabled 406 MHz EPIRB <b>OR</b> if worn by at least one person, a GPS enabled PLB. Distress beacons must be in-date and registered with AMSA.		<b>RECOMMENDED</b>	✓
<b>Red and Orange Flares (in-date)</b> At least two hand held red flares and two hand held orange flares must be carried. <b>OR</b> <b>Electronic Visual Distress Signal</b> An electronic signalling device may be carried in lieu of flares <b>IF</b> a GPS enabled EPIRB or PLB (must be worn) is also carried.		<b>RECOMMENDED</b>	✓
<b>Marine Radio</b> A HF or VHF marine radio on any Registrable Vessel when operating more than <b>4 nautical miles</b> from shore in unprotected waters.		<b>RECOMMENDED</b>	<b>REQUIRED</b> beyond 4 nautical miles <b>RECOMMENDED</b> within 4 nautical miles
<b>Recommended Additional Safety Equipment</b> It is recommended an anchor and line, a fire extinguisher and a means of removing water be carried.		<b>RECOMMENDED</b>	<b>RECOMMENDED</b>

SERM-OLM0722-1

#### Contact details

Department of Transport

Email: [Ed.Boat@transport.wa.gov.au](mailto:Ed.Boat@transport.wa.gov.au)  
Website: [www.transport.wa.gov.au/marine](http://www.transport.wa.gov.au/marine)  
Marine Safety Hotline: 13 11 56

#### Police

Emergency: 000  
Water Police: 9442 8600

Department of Fire and Emergency Services

Marine Rescue Western Australia  
Emergency contact: VHF 16  
Marine Rescue Augusta  
Marine Rescue Margaret River  
Marine Rescue Naturaliste - Dunsborough  
Marine Rescue Caple

#### Boating Weather Forecasts

Boating weather: 1300 815 916  
Website: [www.bom.gov.au](http://www.bom.gov.au)

#### Department of Primary Industry and Regional Development

Fishwatch: 1800 815 507  
Website: [www.dpirdir.wa.gov.au](http://www.dpirdir.wa.gov.au)

#### Department of Biodiversity, Conservation and Attractions

Website: [www.dbca.wa.gov.au](http://www.dbca.wa.gov.au)



Boating in WA just got smarter.  
Download the free Deckee app.



anywhere, anytime!  
Save time and go online today

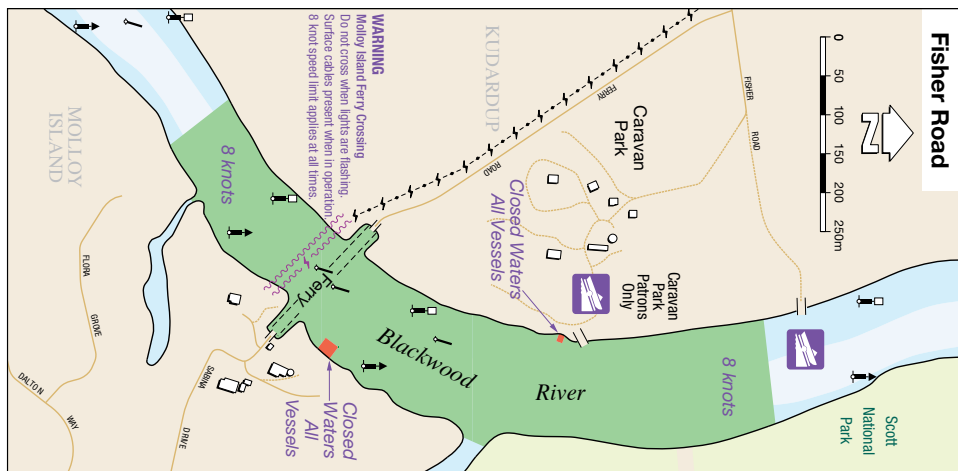
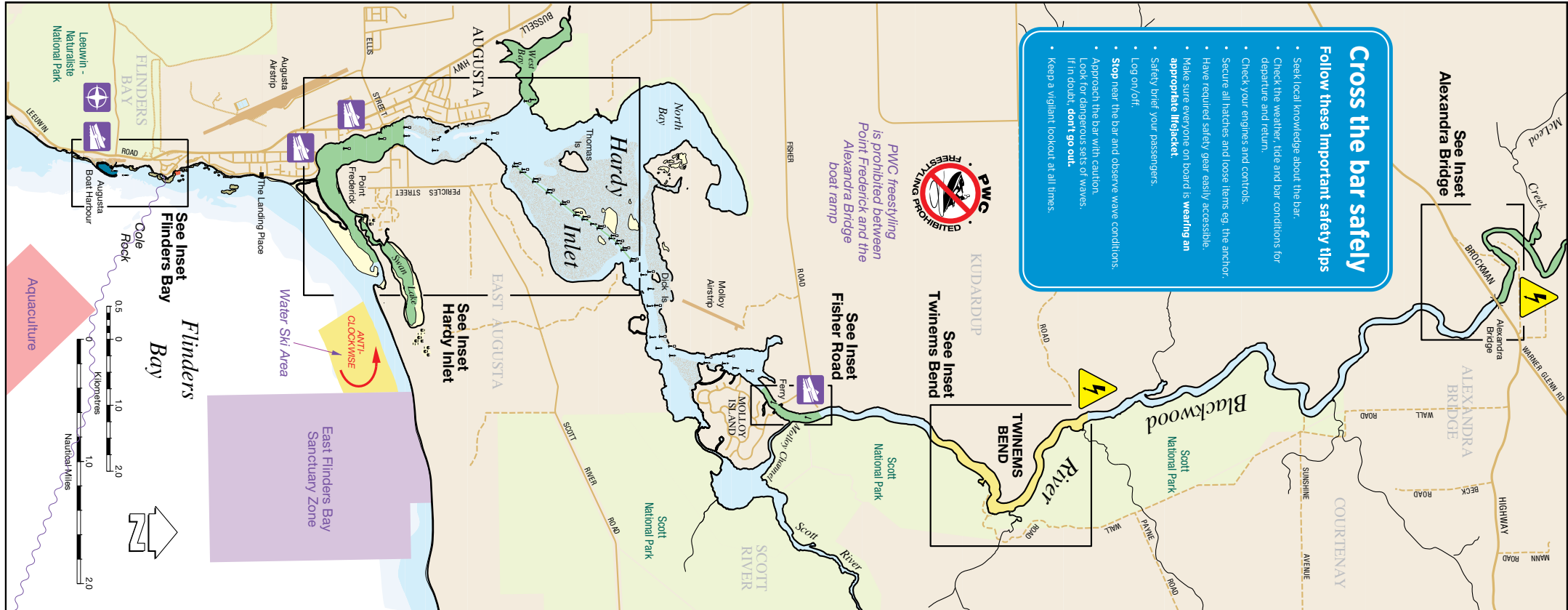


Join us at  
[facebook.com/MarineSafetyWA](https://facebook.com/MarineSafetyWA)

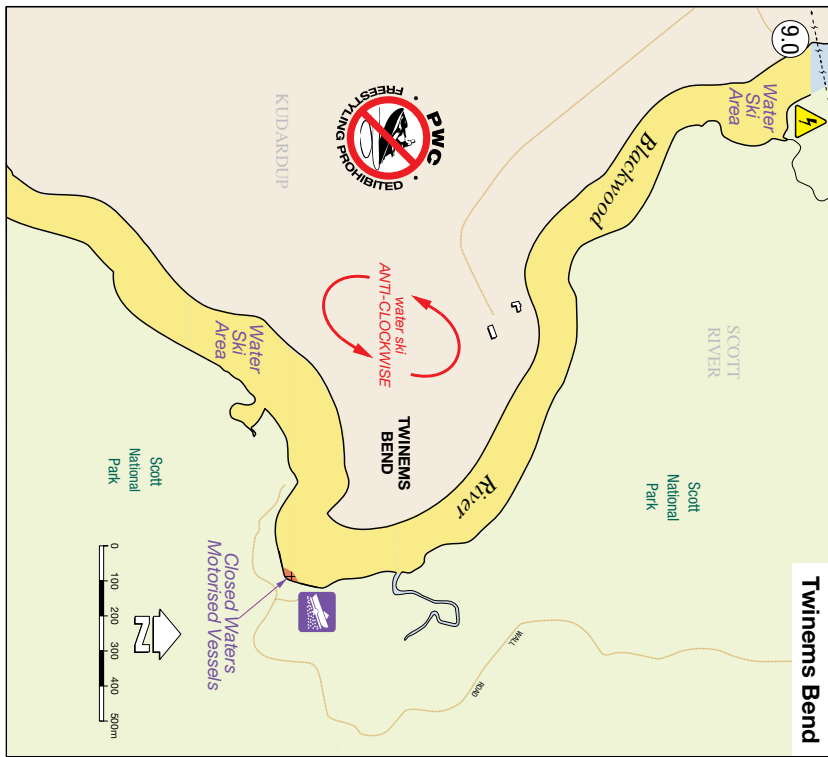
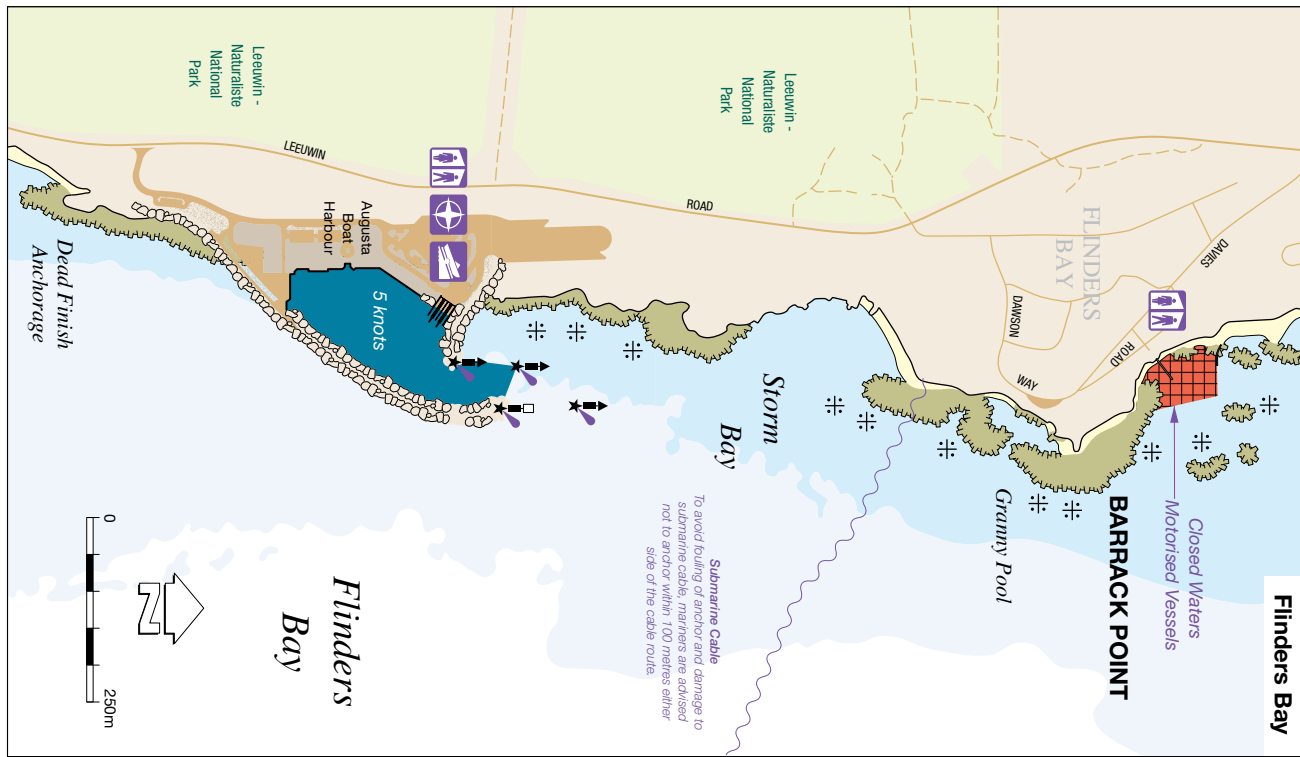
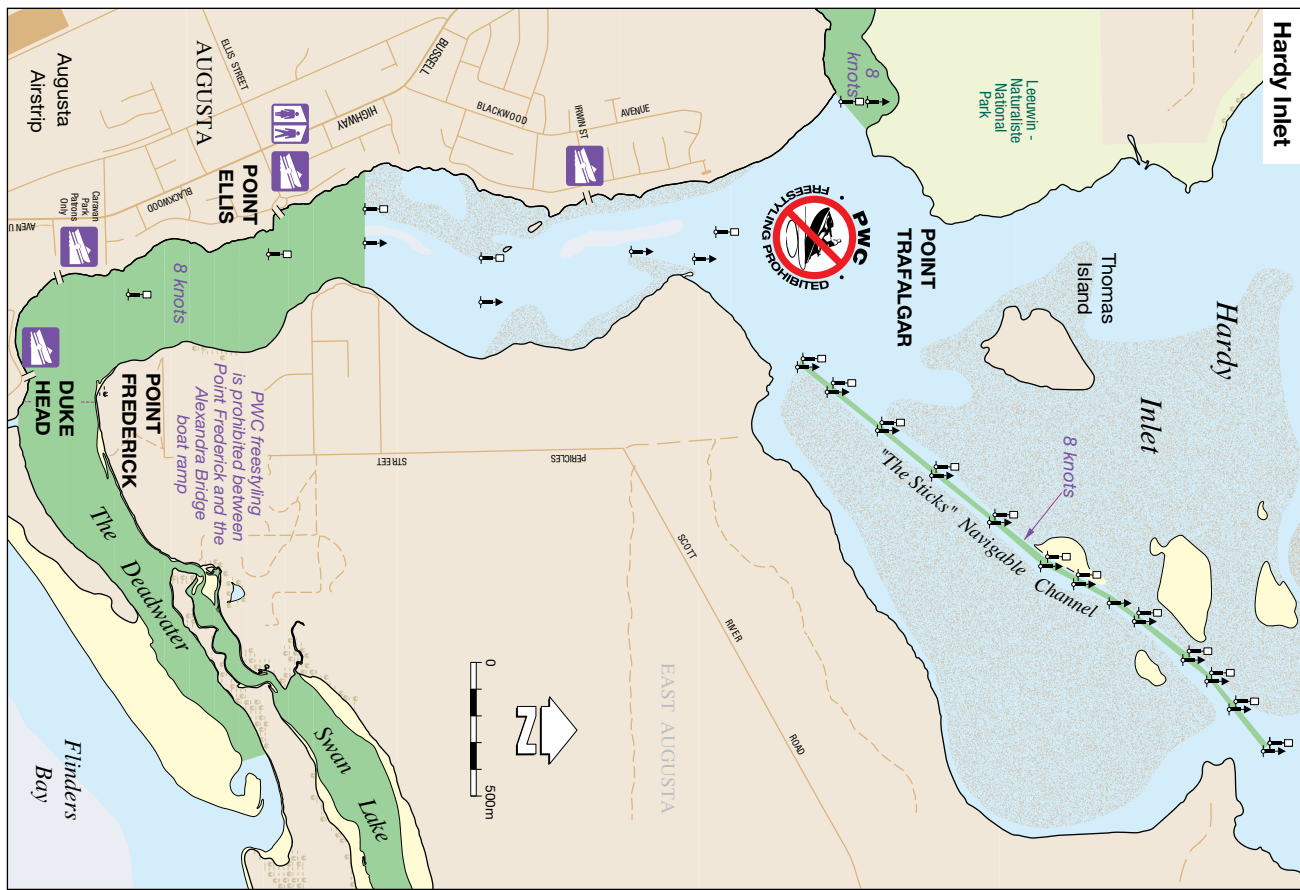


For further information go to  
[www.transport.wa.gov.au/boatingguides](http://www.transport.wa.gov.au/boatingguides)  
or scan the QR Code

The information contained in this publication is provided in good faith and believed to be accurate at time of publication. The State shall in no way be liable for any loss sustained or incurred by anyone relying on the information. 16-02-02-SER-0523-WEB-S1

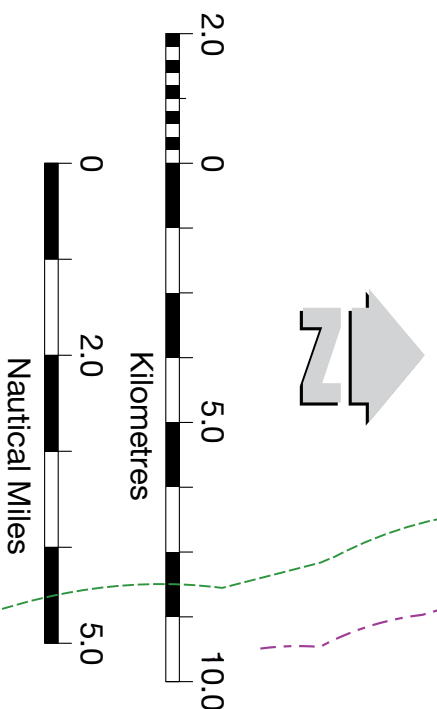


**Remember to LOG ON! LOG OFF!**  
every trip  
with the local Marine Rescue group

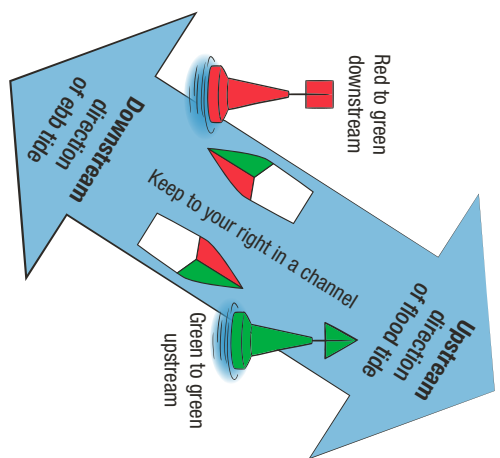




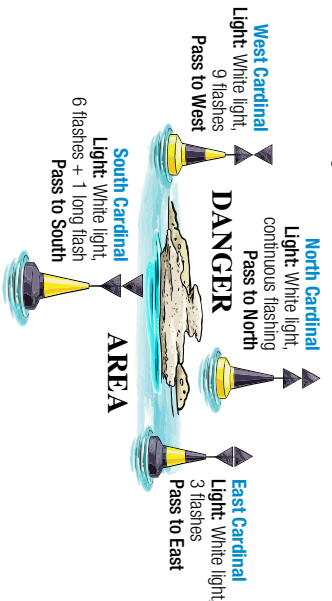
NOT TO BE USED  
FOR NAVIGATION



- Legend**
- 5 Knot Speed Limit
  - 8 Knot Speed Limit
  - Closed Waters – All Vessels
  - Closed Waters – Motorised Vessels
  - Water Ski Area
  - Sanctuary Zone
  - Aquaculture Area
  - Parking / Ramp Boat Launching
  - Public Toilet / GPS Validation Marker
  - 4 Nautical Miles from mainland shore
  - Marine Park Boundary
  - Submarine Cable
  - Rock, Rock awash

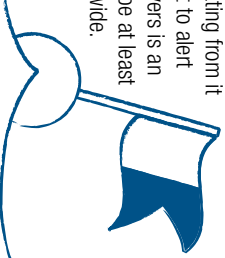


Used to indicate that deeper water lies in a compass direction away from a danger area such as a reef, shallow areas, etc.



**Diving**

Any boat with divers (not snorkellers) operating from it must always display signals by day or night to alert other boat users. The daytime signal for divers is an International Code Flag 'A'. The flag must be at least 750 millimetres long and 600 millimetres wide.



The flag must be clearly visible to all vessels operating in the vicinity.

**Vessels to keep clear**

When approaching a place or another vessel displaying the International Code Flag 'A' or the appropriate signal during the hours of darkness, you must —

- keep your vessel at least 50 metres clear of that place or vessel; or
- where it is not possible to keep 50 metres clear of that place or vessel —

- proceed at the slowest speed at which the vessel can be safely navigated; and
- maintain a proper lookout for people in the water.

For further information visit our website or call 13 11 56.

**Vessel Overtaking**



Every overtaking vessel gives way (this includes sailing vessels).

**Power Vessels Meeting Head On**



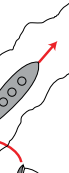
Each vessel alters course to starboard (right).

**Power Vessels Meeting**



Give way to vessels on your starboard (right).

**Ships in Channels**



All vessels must keep clear except when sailing in the marked navigation channel strips.

**CAPE CLAIRAUT**

Initialdu Sanctuary Zone

Leaun National Park

QUININUP

Moses Rock +

Ngari Capes Marine Park

Cowaramup Reef

Cowaramup Bay

Cowaramup

WILLYABUP

GRACETOWN

COWARAMUP

SEE INSET

GRACETOWN

PREVELLY

GNARABUP

Cow Rock +

CAPE MENTELLE

MARGARET RIVER

GNARABUP

SEE INSET

MARMADUKE POINT

Georgette Isaacs Rock

REDGATE

ROAD

WITCHCLIFFE

FOREST GROVE

BLACKWOOD

WARNER

GLEN

ALEXANDRA BRIDGE

KUDARDUP

KARIDALE

DEEPPENE

SW Rock #

FOUL

Hamelin Island

Hamelin Island Sanctuary Zone

Old Man Rock #

Edith Rock #

Hamelin Bay

CAPE FREYCINET

South-west Corner Marine National Park (Commonwealth)

Caution

During moderate swell seas may break over depths of about 6 metres.

Keep to your right in a channel

Red to green downstream

Green to green upstream

West Cardinal Light: White light, 9 flashes, Pass to West

North Cardinal Light: White light, continuous flashing, Pass to North

East Cardinal Light: White light, 3 flashes, Pass to East

South Cardinal Light: White light, 6 flashes + 1 long flash, Pass to South

Downstream direction of flood tide

Upstream direction of flood tide

**Distress beacons, EVDs and flares must be in-date**



**Distress beacons (in-date)**

EPiRB (AS/MZS 4280.1) or PLB (AS/MZS 4280.2)

Distress beacons must be in-date and registered with Australian Maritime Safety Authority (AMSA).

When operating more than 400 metres from shore in unprotected waters you must carry a GPS-enabled EPiRB or PLB worn by a person on board.

For further information visit our website or call 13 11 56.



**Navigation lights**

All vessels underway during the hours of sunset to sunrise must display appropriate navigation lights for the size and type of craft.

For further information visit our website or call 13 11 56.

**GPS validation markers**



Global Positioning System (GPS) validation markers are unique visible marks placed at a number of public boat ramps and jetties where skippers and owners of portable GPS units can validate their position and map datum settings. The markers are small, flat and yellow, similar to cats eye road lane markers.

For further information visit our website or call 13 11 56.



**Water skiing**

Water skiing involves being towed over water at a speed of 8 knots or more by a motor boat.

It takes at least three people to go water skiing:

1. A driver of at least 17 years of age with a Recreational Skipper's Ticket.
2. An observer of at least 14 years of age.
3. A person being towed.

Vessels taking off with skiers always give way to vessels landing a skier.

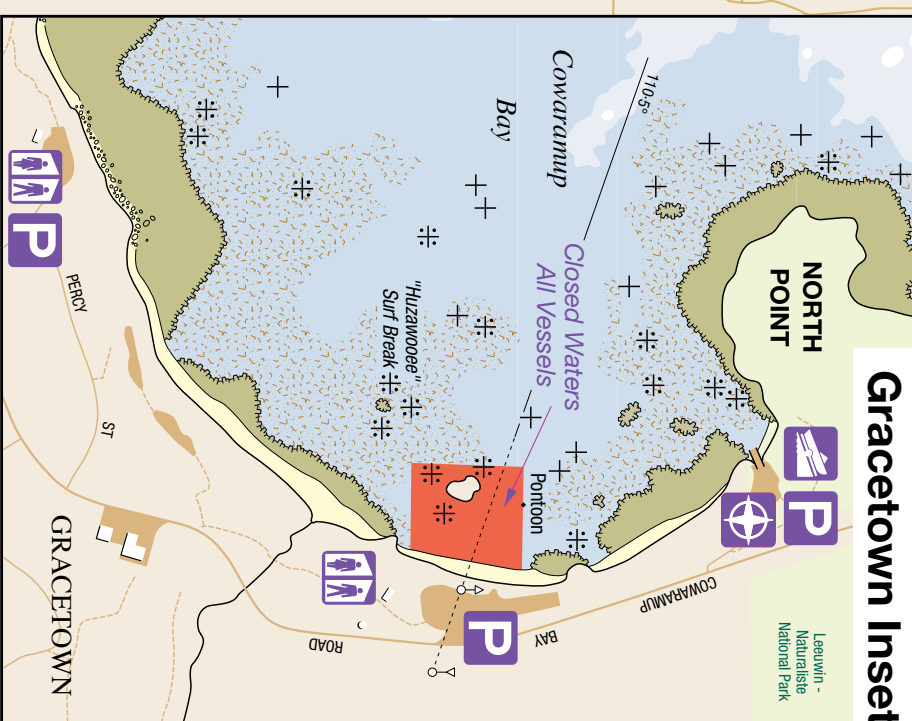
Beach take-off and landings are only permitted in the designated take-off and landing areas.

Skiing is only permitted between the hours of sunrise to sunset, unless otherwise indicated.

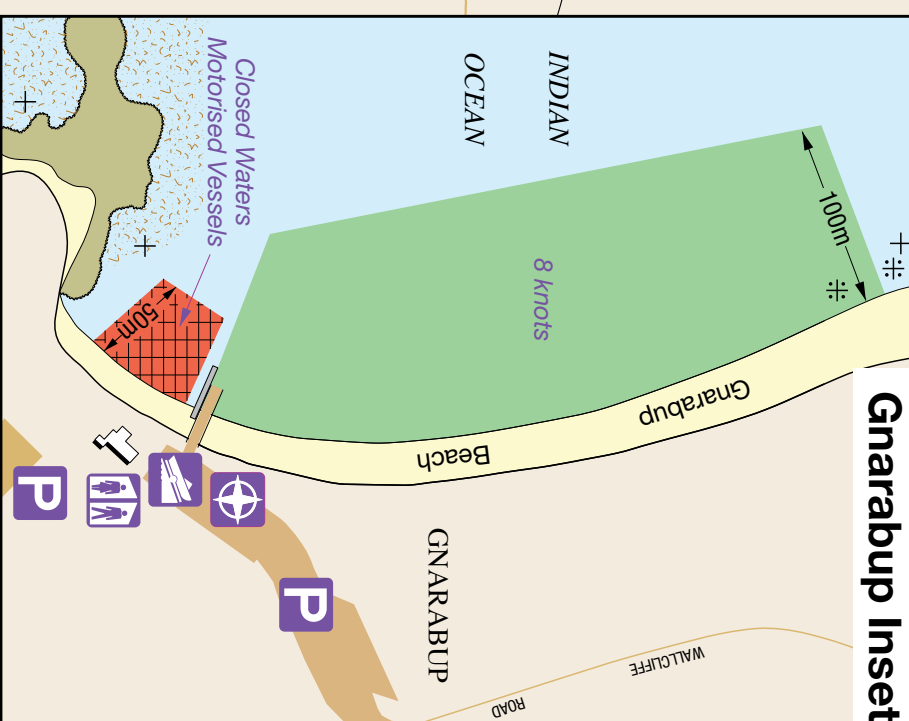
For further information visit our website or call 13 11 56.



**Gracetown Inset**



**Gnarabup Inset**



**Augusta Boat Harbour Inset**



**Remember to LOG ON! every trip**

with the local Marine Rescue group

**SOUTHERN OCEAN**

**LEDGE POINT**

**DUKE HEAD**

**POINT FREDRICK**

**BARRACK POINT**

**Seal Island**

**Quarry Bay**

**CAPE LEEUWIN**

**CAPE FREYCINET**

**CAPE CLAIRAUT**