



Armadale Line Active Travel Project

Key Findings





Contents

Armadale Line Active Travel Project. . . 3

Objectives and outcomes 4

Project objectives 5

Capability, opportunity and motivation. . . . 5

Project delivery. 5

School and parent engagement outcomes . 6

Community engagement. 8

‘School Open Street’ trial 10

Parent focused school active travel trials. 11

Project challenges 13

Project insights 13

Endnotes. 14

Acknowledgment of Country

The Department of Transport acknowledges the Traditional Custodians of the land throughout Western Australia and pays our respects to Elders past and present.

We acknowledge the members of all Aboriginal communities, their cultures and continuing connection to Country throughout the State.

About this Report

The information contained in this publication is provided in good faith and believed to be accurate at time of publication.

The State shall in no way be liable for any loss sustained or incurred by anyone relying on the information. © Department of Transport 2025

Alternative formats

This publication is available in alternative formats upon request. Contact us to request a copy or submit an enquiry.

Armadale Line Active Travel Project











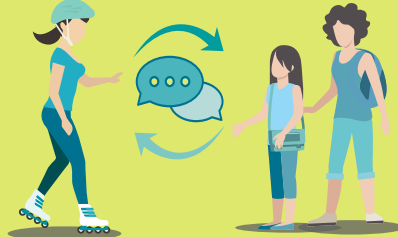
Disruptive events can become windows of opportunity to instigate changes in travel behaviour. The Armadale Line shutdown was one such event. With the train line shutdown, people's travel habits were interrupted, creating the opportunity to encourage and promote active travel.

The Department of Transport (DoT) managed the Armadale Line Active Travel (ALAT) project in partnership with METRONET, the Office of Major Transport Infrastructure Delivery (OMTID), Public Transport Authority (PTA) and project delivery alliances. Initiatives were delivered in 2023-24 and 2024-25 in collaboration with four local governments and 14 schools.



The project empowered impacted schools and communities to co-design localised solutions, resulting in positive community sentiment and increases in active travel, whilst managing demand across the local road network.

The results measured against the project objectives were overwhelmingly positive. The project demonstrated the value of integrating active travel engagement in schools and communities in parallel with major transport infrastructure delivery and network disruption.

Objectives	Outcomes	
Work with community and schools to identify active travel opportunities 	Delivery of whole school engagement in 14 schools reaching 7,500 students 	Co-design and delivery of active travel events and initiatives involving community across 4 local governments 
Increase awareness of active travel options 	76% of parents involved with the 'School Open Street' trial or parent engagement activities said the initiatives made them more supportive of their children walking or riding to school	20,000 large maps and 8,000 pocket maps were distributed to four local government communities
Increase adoption of active travel in schools and community 	13% increase in walking, biking and scootering to school 	45% of students walked or rode to school in Term 4 2024 (after the project), higher than the Perth average of 20%
Reduce impact on local traffic congestion 	6% reduction in student trips to school by car 	
Improve community connectedness 	81% of parents agreed the 'School Open Street' trial and parent engagement activities helped them meet other parents at school	

This report summarises key ALAT project findings and insights from school and parent engagement and community activation.

Project objectives

The main aim of the project was to support the community to choose and use active transport during the Armadale Line closure. The project objectives were to:

- align with OMTID and delivery alliances, METRONET and PTA project objectives, planning and stakeholder engagement;
- work with the community and schools to identify active transport opportunities during the rail line closure;
- increase awareness of active travel options during planned disruptions to the public transport network;
- support the community and schools to adopt active transport during the rail line disruption and closure periods;
- reduce the impact of the railway line shutdown on local traffic congestion; and
- improve community connectedness through active transport.

Capability, opportunity and motivation

Project initiatives were designed using the COM-B behaviour change model. Capability (C), Opportunity (O) and Motivation (M) are interacting components needed to change behaviour. Delivering initiatives and engagements that increase people's capability, and creating opportunities to participate in active travel in a safe, supported environment, improves their motivation and leads to a change of attitudes and behaviours. The model was used to evaluate the impact of the project.

Project delivery

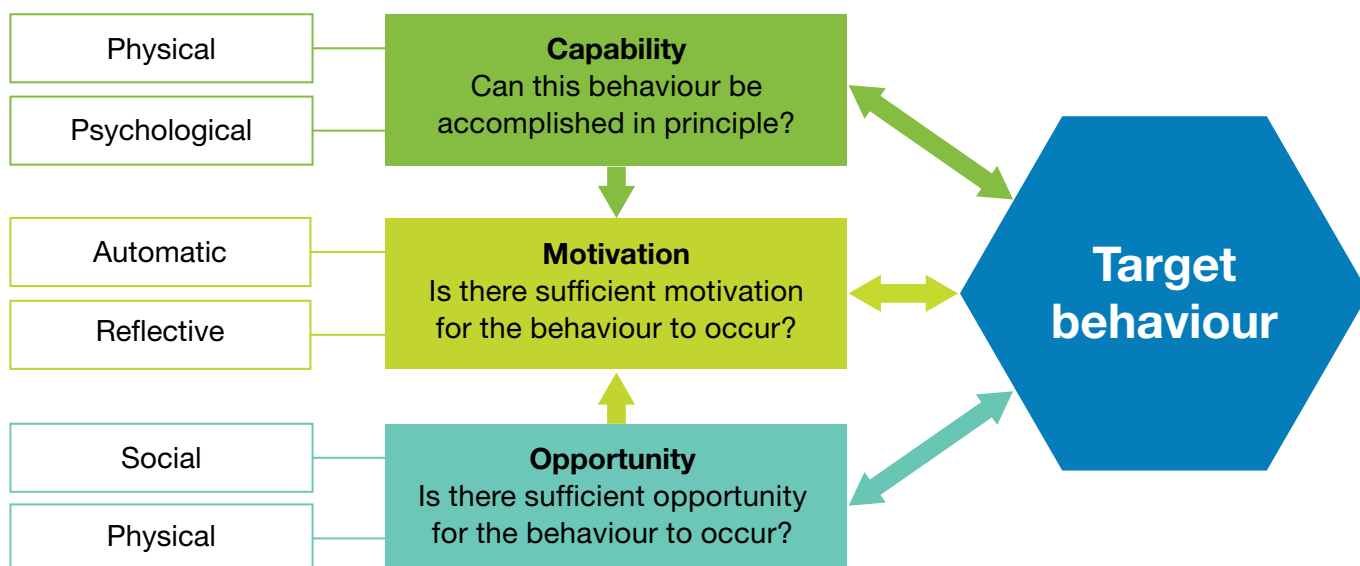
School engagement: intensive version of the flagship Your Move Schools program delivered to 14 schools, including a 'Bike Rescue' program offered to all high schools.

Parent engagement: including a 'School Open Street' trial (Queens Park Primary School) and parent focused school active travel trials, delivered at four ALAT schools.

Community activation: community active travel initiatives within the four local governments, including trialling community walking circles.

COM-B behaviour change model

COM-B is a behaviour change model developed at the University College London (UCL) by Susan Michie, Maartje van Stralen, and Robert West in 2011



School and parent engagement outcomes

School engagement

- Delivery of Western Australia's **first 'School Open Streets' trial** at Queens Park Primary School. On average, 190 students and parents attended before and after school events on the three school open street days.
- **All 14 schools achieved Your Move program accreditation** which is a measure of engagement - four schools achieved the highest accreditation of Double Platinum, three achieved Platinum, five secured Gold accreditation and two schools reached Silver.
- Three schools were awarded a major **Connecting Schools Grant**, totalling \$67,000.
- **14 'safe route to school' access guides** were prepared and distributed, and wayfinding stencils were applied on nominated routes.
- **Bike education sessions** boosted the safe bike riding skills and confidence of 859 students.
- **Over 300 student bicycles** received professional mechanic checks and repairs for safety.
- **17 Your Move teacher champions** from nine schools attained a 'WestCycle Teacher Accreditation: Cycling' certificate to help them deliver sustained bike education sessions in schools.
- **Active travel festivals**, involving whole school incursions about active travel and road safety, were held in eight primary schools.
- **The 'Bike Rescue' program** involved students building and repairing bicycles. Up to 54 students completed the program; building 81 bicycles and donating 30 of those to six primary schools who were also involved in the ALAT project.

- 48 student leaders from six schools participated in **youth Leadership Labs** and supported active travel promotion with their peers.
- Five schools were successful in getting a **WA Bike Month grant**, which helped them implement activities with 800 participants in October 2024.
- Engagement via presentations, **discussions with six P&Cs** and opportunities to empower parents to promote active modes of travel.
- **Professional development** on communication tips and influence for 14 teachers in schools.
- **In-school support** with activity planning, classroom activities, bike education and active travel festivals, directly supported by DoT school active travel officers over 12 months.

Changes in behaviour and attitudes

Walking, biking and scootering to school increased 13 per cent and car use declined by six per cent.¹

- **45% of students** walked or rode to school in Term 4 2024 (after the project), higher than the Perth average of 20%.
- **76% of parents** involved with the 'School Open Street' trial or parent engagement activities said the initiatives made them more supportive of their children walking or riding to school.
- **78% of these parents** were confident of their children's ability to walk or ride to school, this is higher than parent confidence in general population surveys undertaken by DoT in 2024 (52% bike, 60% walk).
- Since participation in ALAT initiatives, **77% of students** said they would prefer to walk, ride or scoot to school.²



78% *Students now more confident in bike maintenance.*

▼ A bike education session at Challis Community Primary School



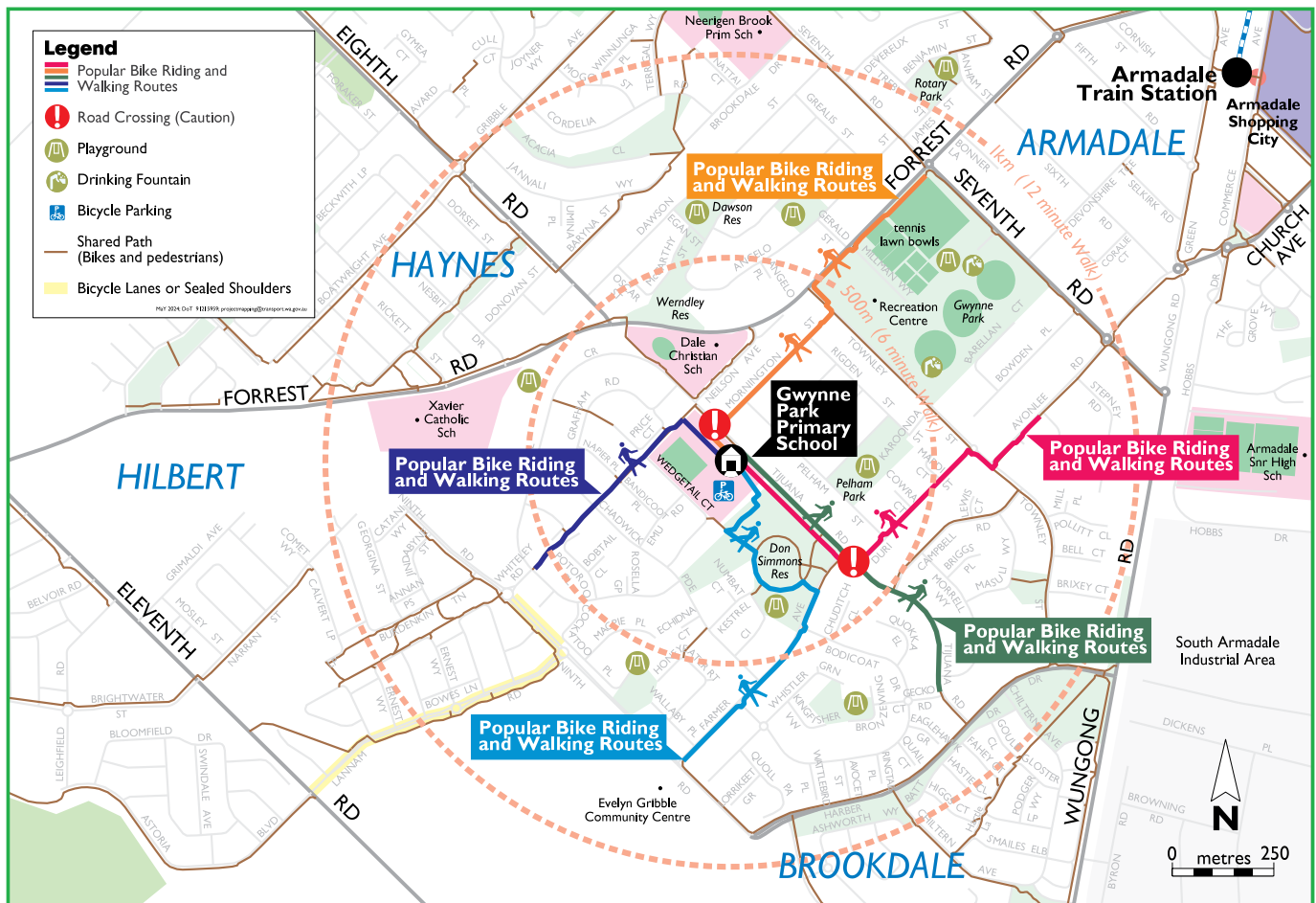
▼ Active travel festival at Ashburton Drive Primary School



▼ Bike Rescue at Southern River College



▼ School access guide map: How to walk or ride to Gwynne Park Primary School



www.yourmove.org.au

The information contained in this publication is provided in good faith and believed to be accurate at time of publication. The State, City of Armadale or Gwynne Park Primary School shall in no way be liable for any loss sustained or incurred by anyone relying on the information. 052024

Community engagement

DoT collaborated with four local governments (Town of Victoria Park and Cities of Canning, Gosnells and Armadale) to provide information, maps, resources and support to encourage their communities to walk, wheel or ride for local trips to school, work and for leisure during the Armadale Line shutdown.

DoT's Active Travel branch attended six METRONET community events to promote the ALAT project and speak directly to members of the community who were affected by the Armadale Line shutdown. Working in tandem with METRONET and PTA staff strengthened cross-portfolio relationships and highlighted the importance of including active travel initiatives in major projects.

Community activation

- **20,000 large maps and 8,000 pocket maps** were distributed to communities through each of the local governments' community facilities and during METRONET and local government events. Digital copies were made available on DoT and local government websites.
- **42 bike checks** undertaken across a range of community events, including at bus interchanges.
- **Maps and journey planning advice** via community bike skills courses for around 50 individuals delivered in the Cities of Canning and Gosnells and Town of Victoria Park.
- **Walking circles** were trialled within the Cities of Canning and Armadale, and the Town of Victoria Park; 39 people registered to take part.

▼ Participants at a bike skills session in Gosnells



▼ Maps were distributed at the City of Canning Community Expo



Across four permanent bike counter sites along the Armadale Line Principal Shared Path, bike use increased by 17 per cent in FY 2023-2024, compared to the previous financial year period.³

The highest number of trips were recorded in March 2024.

Case study

‘School Open Street’ trial

School open streets typically involve a street outside of a school that is temporarily closed to vehicles for an hour before and after school, providing a safer, healthier and more pleasant environment for parents and children at drop off and pick up times.

With support from Queens Park Primary School and the City of Canning, DoT trialled the first school open streets in Western Australia on three consecutive Fridays in November 2024.

The successful trial has led to the City of Canning exploring opportunities to continue implementing school open streets. The City is also improving infrastructure to support more walking and riding to local schools, including road reviews, traffic calming, road treatments, tree planting, park and walk facilities and children’s crossings.

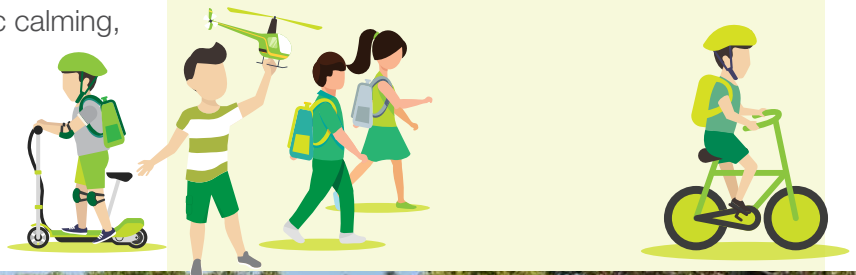
▼ *School Open Street trial event at Queens Park Primary school*

Positive outcomes were demonstrated by the trial:

30% increase in active travel by students

57% of parents walk or ride to school with their children at least a few times a week

81% of parents were more supportive of their children walking or riding to school following the trial.



Case study

Parent focused school active travel trials

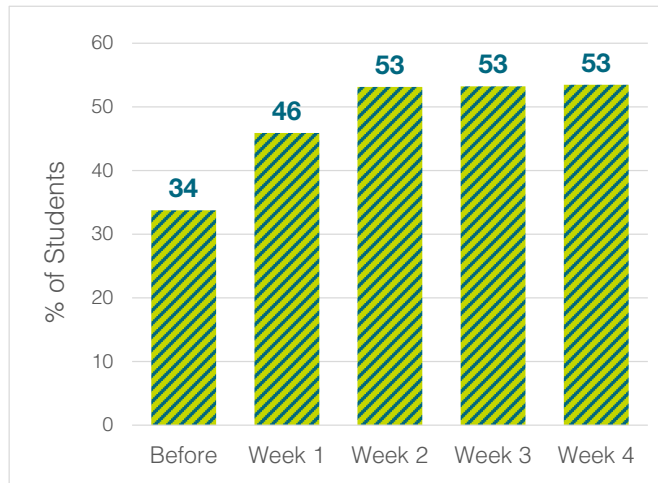
Parents and carers have significant influence on how their children travel to and from school. These trials involved co-designing with parents and guardians from four ALAT schools, which led to four different parent-led active travel initiatives.

Ashburton Drive Primary School: 'Terrific Travel Thursday' (TTT)

Parents and carers walked, wheeled or rode with their children to and from school on Thursdays over four consecutive weeks. As an incentive, weekly raffle draws for small prizes were offered to participants.

▼ Active travel mode share:

Students walking, wheeling or riding to Ashburton Drive Primary School



▼ Ashburton Drive Primary School students forming a 'TTT' on the school oval



Lathlain Primary School: advocacy for safer roads to school

Parents and carers highlighted busy roads and crossings as areas for improvement. Surveys and site audits were conducted with parents and representatives of Lathlain Primary School, Main Roads WA and the Town of Victoria Park.

To address road safety issues, a cross-government initiative is planned which will consider vibrant road art at two key intersections, boosting safety, encouraging more active travel and adding another visual talking point for families on their journey to school.

▼ Parents and local representatives discussing road safety on route to Lathlain Primary School

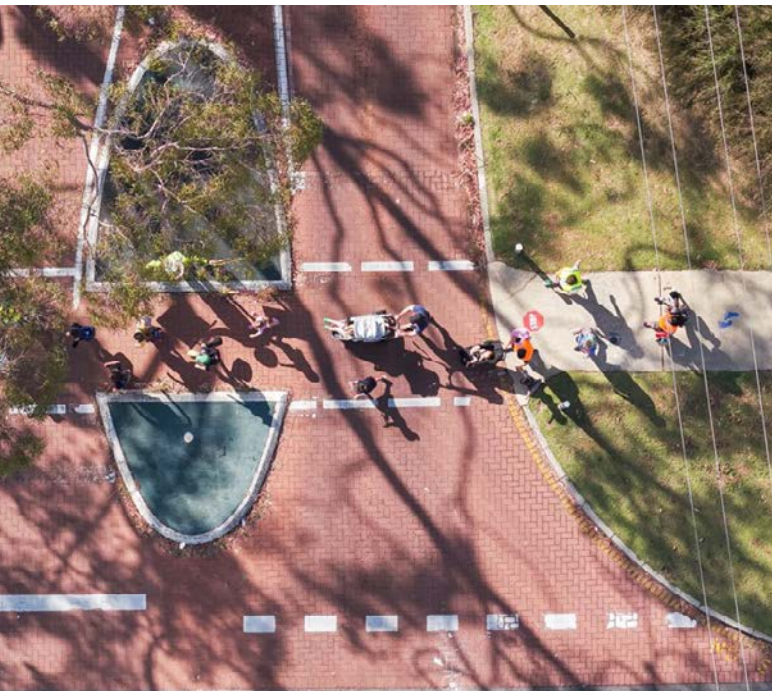


Challis Community Primary School: 'Challis Active Train' (CAT)

Over four weeks, a group of students, along with parents and carers as volunteer leaders, met at a central location and walked, wheeled or rode together on four routes to school: Kaarla (Bob Blackburn Reserve), Boodja (George Foster Reserve), Kep (Morolo Park) and Marr (Morgan Park).

96% *CAT participants over the four weeks of the trial*

▼ *Group of parents and carers with their children travelling on the Challis Active Train*



Gosnells Primary School: increased parent participation in the Your Move Schools program

This trial involved parents and carers participating in an array of flexible active travel activities to contribute to the school's Your Move goal. Gosnells Primary School aimed to earn enough Your Move points to be able to apply for a Connecting Schools Grant to build a sheltered bike cage. Twenty-six families participated in activities, helping the school to achieve Double Platinum accreditation and successfully apply for a grant.

▼ *Parent bike workshop at Gosnells Primary School*



Project challenges

- Four schools didn't achieve increases in active travel after the project, despite achieving gold (and above) accreditation levels. Future initiatives should consider longer-term tracking of behaviour after project completion.
- High school engagement required a nuanced approach to delivering activities including student travel surveys and events. Students should be sought for increased input and ownership in future projects through a revised student leadership lab model.
- DoT was unable to procure a service provider for delivery of the intensive in-school support. This impacted scheduling of activities.
- Delayed engagement and limited breadth of activities delivered to East Victoria Park Primary School due to significant Armadale Line construction works.
- Difficulties sustaining school champion interest over the project duration. Future projects need to balance activities across the school year to respond to school needs and capacity.

Project insights

- Early engagement with OMTID, METRONET and the delivery alliances provided understanding of both the larger rail transformation project, and conversely, active travel behaviour change. This enabled better engagement with the community, local government and schools, as messages were complementary and aligned.
- Intensive in-school support enabled DoT, via the ALAT project, to be a conduit between METRONET, the alliances, local governments and schools, providing them with a means to raise and address concerns early and through proactive face to face engagement and feedback.
- Active travel initiatives that parallel transport infrastructure development inspire increased active travel behaviour in communities and create positive sentiment in schools and communities during a time of disruption.
- To deliver school open streets more broadly across Western Australia, a reduction in the costs of traffic management or new approaches to constraining the road space for this purpose should be considered. The City of Canning is currently investigating infrastructure solutions that would improve active travel connectivity and enable easier and cheaper delivery of school open streets in the future.
- The 'Bike Rescue' program is an important high school engagement tool. It directly benefits disengaged students, in addition to increasing bike trips by participating students.
- Engagement with students, parents and carers, school administration and local governments in review of 'safe routes to school' access guides was instrumental in building ownership of local routes.
- Early interaction with schools was important to build interest in Your Move and the ALAT project, identify champions and understand the local context providing a good basis for implementing active travel initiatives during the shutdown.
- The ALAT project trialled approaches to effectively engage with culturally diverse communities, including co-design, communication and data collection for evaluation. Local community networks and local governments were critical to successfully engaging with diverse groups.

Endnotes

- 1 From student hands up surveys at schools involved in the ALAT project.
- 2 Report: Painted Dog Research 2025 School-based Active Travel Initiatives Evaluation. Report for the Department of Transport.
- 3 Whilst the increase cannot be attributed to project initiatives it is a secondary data source that points to growth in active travel in this region.





Contact

Department of Transport

140 William Street

Perth WA 6000

Telephone: (08) 6551 6000

Website: transport.wa.gov.au